

9th Triennial International Child and Youth Care Conference

Fort Lauderdale Florida USA - May 26-29



Global Warning: Child, Youth and Family Matters 2009

PROGRAM

www.icycc2009.com





CHARLIE CRIST
GOVERNOR

May 29, 2009

Dear Friends:

Welcome to the 9th Triennial International Child and Youth Conference!

As Governor of the great State of Florida, I am committed to providing opportunities for at-risk children, young people, and families to succeed. It is important that every child in the Sunshine State has the ability to follow their dreams. Therefore, it is vital for agencies, professionals, and volunteers to work together to meet the needs of some of Florida's most deserving citizens. This year's conference will raise public awareness on children, youth, and families in the Child Welfare System and the Juvenile Justice System as well as allow advocates from all over Florida and across our nation to engage in discussion of new ideas and ways to improve current programs.

Thank you to Nova Southeastern University, the Council of Canadian Child and Youth Care Associations, and the Association for the Child & Youth Care Practice Inc. for your hard work and commitment to present this special event. Your dedication has impacted countless individuals.

Best wishes for a successful conference!

Sincerely,

Charlie Crist



THE CAPITOL
TALLAHASSEE, FLORIDA 32399 • (850) 488-2272 • Fax (850) 922-4292



Provost's Conference Greeting

On behalf of Nova Southeastern University's Fischler School of Education and Human Services learning community, I cordially invite you to participate in this assembly of talent. It is our distinguished honor to welcome you, and I express my hope that you will experience all that our conference has to offer.

On a personal note, I would like to extend a word of thanks and appreciation to you for the outstanding work that you do! I believe that you will find Nova Southeastern University's Fischler School to be a strong partner in this effort as we are committed to excellence in educational programming as we successfully strive to meet the needs of working professionals and students alike.

We envision this 2009 conference entitled: Global Warning: Child, Youth, and Family Matters, to address the successful enhancement of both your professional and personal growth. During our time together, we will focus our attention on the significant contributions of every stakeholder.

I appreciate that many of you will travel great distances in order to be present at this Triennial International Child and Youth Care Conference. We have assembled leading researchers, practitioners, and child and youth care workers to engage in an important dialogue addressing the lives of children, youth, and families around the world. I ask that you explore our vast resources, share information with one another, and incorporate best-practices gleaned from our 2009 conference when you return home.

Enjoy a promising conference!

Sincerely,

H. Wells Singleton, Ph.D
*Education Provost and University Dean
Fischler School of Education and Human Services
Nova Southeastern University*



WELCOME MESSAGE

Global Warning: Child Youth and Family Matters

There is a similar trajectory between global warming and global warning and unless something realistically is done to reverse current trends, the consequences could be disastrous. There is a real global warning that if we do not do for at-risk children, youth and families what they need, the world will continue to hemorrhage and lose valuable, promising, lives and with that the future is bleak. We can determine the shape of the human footprint as it affects the lives of our children, youth and families. The Global Warning: Child, Youth and Family Matters is a laser focus from the perspective of:

The professionals and service providers, the people being served, and the philanthropists and organizations that support the work being done.

The alignment of these stars, the organizations, philanthropists, the staff and the clients is imperative in order to produce stellar outcomes. Do we really know what is happening to children and youth in care? Think about what you know about at-risk young people, people in foster care, in residential care in independent living, children aging out of the system. Think about children who have nothing, and do not even know that they can want something, children whose courage is being denied. Think about children who become relationship-indifferent. Think about children who are estranged from their kith and kin; their intimate environments and even alienated from who they really are, children for whom denial and the delusion of indulgence is the best safe space and hope for survival. Think about children, youth and families who have nothing that can fuel their courage to survive. I invite you to join us as we co-create a difference through our communal presence in time and space.

VISION:

To bring together agencies, professionals and clients in support of a global leadership endeavor toward advocacy, programming and quality services delivery that will improve the lives of at-risk children young people and their families.

FOCUS:

Children, Youth and Families in the Child Welfare System.

WORKSHOP PRESENTERS:

More than 160 presenters from all over the world will deliver over 110 workshops in a large array of relevant topics.

TRACKS:

in Adoption, Foster Care, Residential Treatment, Group Care, Independent Living, In-Home-Care, Community Based Care, Juvenile Justice, Early Childhood Education, Special Education, Homeless Children and Youth, Epilepsy and Seizure Disorders.

TOPICS AT A GLANCE:

- * Substance Abuse
- * Research and Training Initiatives
- * Child and Youth Development
- * Teen Pregnancy
- * Family-Centered Practice
- * Cultural Competence/Diversity
- * Advocacy & Public Policy
- * Professional Standards
- * Abuse & Neglect
- * Obesity
- * Internet - Abuse Child Pornography
- * Dealing with Aggression Issues
- * Ethical Practice Issues
- * Attachment Issues
- * Homelessness

ATTENDEE PROFILE:

Close to 2000 child and youth care workers, healthcare providers, students, social workers, researchers, teaching professionals and child welfare trainers are expected to convene in Fort Lauderdale, Florida in May 2009 from countries all over the world.

PREVIOUS CONFERENCE:

The Triennial International Child and Youth Care Conference most recently hosted the 8th ICYCC with over 1600 international participants from 38 countries, in Montreal, Quebec in 2006.

PRESENTING ORGANIZATIONS:

Nova Southeastern University (NSU)
Council of Canadian Child and Youth Care Associations (CCCYCA)
Association for the Child & Youth Care Practice Inc. (ACYCP)

THE CO-CHAIRS



Dr. Michael W. Gaffley Ed. D. CYC-P
Special Project Manager and Program Professor
Programs in Child and Youth Studies
Fischler School of Education & Human Services
Nova Southeastern University



Heather Modlin Psy.B. Msc CYCA
Past President
Council of Canadian Child
and Youth Care Associations



Dr. Chip Bonsutto LSW CYC-P
Past President
Association for the Child
and Youth Care Practice

WEEK-AT-A-GLANCE

Time	Pre-Conference Day Tuesday, May 26	Wednesday, May 27	Thursday, May 28	Friday, May 29
7:00	Registration Broward Convention Center	Registration Broward Convention Center	Registration Broward Convention Center	Registration Broward Convention Center
8:00		8:00 – 10:00 Welcoming Breakfast And Exhibit Opening		
9:00 – 10:00			Keynote Lecture David Lawrence Jr.	Keynote Lecture Andrew Schneider-Muñoz
10:00 – 10:30	ICART Full Day Training Seminar 9:00 – 4:30	10:00 – 10:45 Opening Ceremonies	Break and Exhibit	Break and Exhibit
10:30 – 12:00		10:45 – 12:00 Keynote Lecture David Bennett	Workshops	Workshops
12:00 – 1:30		Lunch Break and Exhibit	Lunch Break and Exhibit	12:00 – 12:30 Closing Ceremony
1:30 – 3:00		Educators & Trainers Full Day Meeting 9:00 – 4:30	Workshops	Workshops
3:00 – 3:30	Break and Exhibit		Break and Exhibit	
3:30 – 5:00	Workshops		Workshops	
Evening	5:00 Welcome Reception Broward Convention Center	CYC-P Testing Free Evening	7:00 Social Event Location TBA	

KEYNOTE SPEAKERS



David Bennett
Sidney, AUSTRALIA

Clinical Professor Dr. David Bennett AO FRACP FSAM is an adolescent health physician with a major interest in the development of accessible and responsive health services for young people and their families.

As Head of the NSW Centre for the Advancement of Adolescent Health, he is involved in wide ranging efforts to improve the health and wellbeing of young people through collaborative research, education, networking and advocacy. Previous roles include Head of Department of Adolescent Medicine at The Children's Hospital at Westmead (1977 - 2004), President of the International Association for Adolescent Health and Consultant with World Health Organization.

He is currently the National President of the Association for the Wellbeing of Children in Healthcare, Chairman of the Board of Management of Ku-ring-gai Youth Development Service, and serves on a number of high-level policy committees and State and Federal levels.



David Lawrence Jr.
Florida, USA

Mr. Lawrence retired in 1999 as publisher of The Miami Herald to work in the area of early childhood development and readiness. During his tenure as publisher of The Miami Herald, the paper won five Pulitzer Prizes. He is president of The Early Childhood Initiative Foundation and "University Scholar for Early Childhood Development and Readiness" at the University of Florida. He is the chair of The Children's Trust, a dedicated source of early intervention and prevention funding for children in Miami-Dade. Named by Gov. Jeb Bush to the Florida Partnership for School Readiness, he chaired that oversight board for two terms. He is a national board member of the Foundation for Child Development. In 2002-3 he chaired the Governor's Blue Ribbon Panel on Child Protection. In 2002, he was a key figure in passing a statewide constitutional amendment to provide high-quality pre-K availability for all 4 year olds. A fully endowed chair in early childhood studies has been established in his name at the University of Florida College of Education.

He is a graduate of the University of Florida and named "Outstanding Journalism Graduate." He graduated from the Advanced Management program at the Harvard Business School in 1983. In 1988, he was honored with Knight-Ridder's top award, the John S. Knight Gold Medal. He has 12 honorary doctorates, including from his alma mater, the University of Florida



Andrew Schneider-Muñoz
Washington DC, USA

Dr. Schneider-Muñoz works with high risk youth in contested spaces around the world. As a child psychologist and anthropologist, he leads the Center for Youth Development at the Academy for Educational Development in Washington, D.C.

He guides global networks for youth mapping projects in more than 150 communities and best practice initiatives that serve more than one half million after-school programs.

A graduate of Harvard and a long time advocate for high quality youth worker training and professionalization, Dr. Muñoz broke new ground as one of many youth work leaders in the United States and Canada that have founded a new full professional certification for youth workers established through the Association of Child and Youth Care Practice and the National Certification Board.

Andy travels more than 150,000 miles a year and recently trained with youth leaders and youth workers in Russia, Samoa and Mexico. A foster parent himself, Andy also works at least one shift a month doing direct care practice as he visits more than sixty youth care centers a year. He is the editor of the Journal of Child and Youth Care which reaches leading youth development practitioners in more than 100 countries.

KEYNOTE PRESENTATIONS

David Bennett

"Creating Nurturing Environments for Kids At Risk"

Wednesday, May 27, 2009 10:45am - 12:00noon

Resilience - the capacity to bounce back from adverse events or experiences - plays an important role in protecting young people from engaging in negative risk taking behaviour. The 'blueprint' for developing resilient traits (including social competence, problem-solving skills, a sense of purpose and future) is embedded in caring relationships between adolescents and adults. This evidence-based insight is important because the suffering associated with the increasing psychosocial challenges facing this age group is enormous. We know too that teenagers are disadvantaged by incomplete brain maturation and that risky behaviours and poor mental health do not simply vanish with the onset of adulthood! Fortunately, adolescence is a time of second chances. For our families, schools and communities, adolescence offers a golden opportunity to intervene early, build protective factors at every opportunity, nurture wellbeing, and ward off more serious problems before they occur.

David Lawrence Jr.

"Building a Movement for All Children"

Thursday, May 28, 2009 9:00am - 10:00am

David Lawrence Jr. retired from a nationally distinguished career as reporter, editor and publisher – most recently as publisher of The Miami Herald – to devote the second chapter of his life to high-quality early childhood development, care and readiness. He was the principal catalytic force behind the passage of Florida's constitutional amendment for free prekindergarten availability for all 4 year olds, and passage of a dedicated funding source for early intervention and prevention for the children of Miami-Dade County (larger than 16 states in the Union). He will share his thoughts, challenges and successes in helping to build a movement for all children in the early childhood years.

Andrew Schneider-

"Sea Change in Youth Work: Responding to the Global Youth Crisis"

Friday, May 29, 2009 9:00am - 10:00am

In its recent report on Youth Development and the Next Generation, the World Bank has called for every youth around the world to have the access and opportunity for youth development and if necessary be given a second chance for success.

In response to the global youth crisis, Dr. Andy Muñoz has traveled the world this year to understand "first hand" the challenges facing youth workers in countries as diverse as Russia, Samoa, Guatemala, Mexico, and Chad. As a certified youth worker, he brings insights about our future as a profession having worked along side youth workers in villages at war, underground in the sewers, and on the streets in large scale mobilizations.

He will report the changing trends as youth workers organize civic engagement in contested spaces and empower youth to solve the problems of community. Andy is well known for his work with the neediest youth in vulnerable and immigrant populations. Vice President of the Association of Child and Youth Care Practice and a Harvard-trained child psychologist and anthropologist, Andy is co-editor and author of After-School Around The Globe: Policy, Practices, and Youth Voice which covers innovative youth work in every region of the world. Andy was also one of the main organizers when the International Conference met at the University of Wisconsin in Milwaukee.

PRE-CONFERENCE DAY



May 26th, 2009

Keynote Speaker

Dr. Sara Salmon is currently the executive director of the non profit organization, Center for Safe Schools and Communities in Denver, Colorado. She has been a teacher, college professor, assistant superintendent and clinical psychologist. After working closely with Dr. Arnold P. Goldstein, the two of them began developing an extension of the Aggression Replacement Training Program. As a result of that collaboration, she became a master A.R.T. trainer and developed an evidence-based Peace4Kids and Families program which offers a pre-k to grade twelve curriculum for regular schools, alternative schools, special



education facilities and corrections. This curriculum contains training in empathy/emotional intelligence, anger management, character education/moral reasoning and social skills. Her Center has also developed a parent/family program, an effective discipline system and has incorporated Restorative Justice within the program. She has traveled all over the world training educational staff in the development of social intelligence for students and families. She is a board member of ICART and has published several books and articles.

ICART Day Agenda

- 8:00** REGISTRATION
- 9:00** Welcome address by Rune Nensén, Co-founder and Director of ICART
Tony Maciocia, ICYCC Conference Organizer
- 9:15** Keynote Speaker: Dr. Sara Salmon - Colorado USA
"The Effects of Socila Emotional Learning on Academic and Behavioral Success"
- 10:00** Break
- 10:15** Skillstreaming: Bob Oliver - Erie, Pennsylvania
- 10:45** Anger Control: Mark Amendola - Erie, Pennsylvania
- 11:15** Moral Reasoning: Robert Calame - Montreal, Canada
- 11:45** Lunch break
- 1:00** Choice of breakout workshops
 - P.E.A.C.E. 4 Kids and Families**
Sara Salmon
Colorado, USA
 - Family TIES through ART and/or Problem Solving**
Robert Calame and Kim Parker
Montreal, Canada
 - Gains with ART in the Collaborative Intensive Community Treatment**
Mark Amendola and Bob Oliver
Pennsylvania, USA
 - ART in Poland**
Father Paul Rosik
POLAND
 - ART in Juvenile prisons in Sweden**
Eva Johnsson
Ola Hall
SWEDEN
 - Problem Solving**
Kim Parker, John Choi, Andy Simon & Robert Calame
Montreal, Canada
- 4:15** Closing Remarks



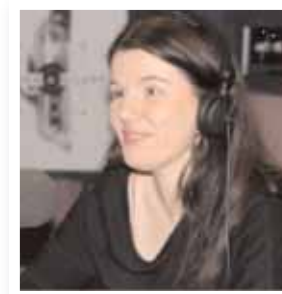
May 26th, 2009

- 9:00 am** Welcome Address. All Day Sessions
- 12:00 -1:30 pm** Lunch (Lunch provided)
- 4:30 pm** Closing Remarks

CO-CHAIRS:

Varda Mann-Feder, Concordia University - Montreal, Canada
Carol Kelly, California State University at Northridge, USA

This preconference day provides educators and trainers in Child and Youth Care with an opportunity to pause and examine current issues in the field, while interacting with colleagues from all over the world. Come join us for a day of informative workshops, networking activities and small group interaction! Bring your programs materials to share with colleagues. Lunch is included in the days' activities, which begin at 9 and end at 4:30 pm.



Keynote Speaker:

Andree Cazabon is an award winning Canadian Filmmaker, youth advocate and mentor, and former youth in care. She will screen her recent work at the preconference day and share her reflections on film as a tool for education, training, and advocacy.

CHOICE OF ALL DAY SESSIONS:

Workforce Crisis & Opportunity: the evolving field and emerging profession.

Dale Curry, Kent State University, Cindy Carraway-Wilson, New England Network for Children, Youth and Family Services, Frank Eckles, CYC Certification Institute, Tony Rodgers, Greene County Children's Services, Sr. Madelaine Rybicki, Holy Family Institute, Carol Stuart, Ryerson Univeristy, Debbie Zwicky, St. Rose Youth & Family Centre.

The development of the child welfare workforce continues to be a critical issue in the United States. Certification for Child and Youth Care became available nationally in 2008 and some states are now requiring credentialing. The field is evolving in the direction of increasing the value of training and credentially by using a unified set of competencies drawn from multiple practice environments. This workshop will explore the implications of these

PRE-CONFERENCE DAY

developments to educators and trainers and will offer practical approaches to increasing the value of your training by aligning your efforts with national trends and workforce needs.



Accreditation in Canada: An interactive workshop.

Carol Stuart, Ryerson University,, Heather Modlin, Council of Canadian Child and Youth Care Associations, Roy Ferguson, University of Victoria, Gerard Bellefeuille, Grant MacEwan Community College, Bruce Hardy, Douglas College .

This workshop represents the third step in an exciting consultation process that is the basis for the development of an accreditation model for post-secondary CYC training programs in Canada. Building on previous work at the 2006 International Conference and the 2008 Canadian national conference, members of the accreditations task force will present the first draft proposal for a model of Accreditation, and participants will be engaged in a structured dialogue that will result in further articulation of the model.

Professionalization: where are we now? Strategies for continued development as a profession.

Martha Mattingly, University of Pittsburgh, USA

The purpose of this session is to look at the current status of child and youth care as a profession and discuss priorities and strategies to support the evolution of the field. Dialogue would result in prioritizing needed action and strategies to continue the professionalizing of child and youth care.

Research in Child and Youth Care: continuing challenges and positive action.

Andy Schneider-Muñoz, Academy for Educational Development, Washington DC, USA

Social growth modeling or developmental case studies? How do we demonstrate and strengthen the relationships that change over time in our work?

This will be a highly interactive session to share trends and strategies for research, monitoring and evaluation in child and youth care wrok. For researchers, professors, trainers and direct care workers alike, we will spend time in this session sharing the methods in use in our centers and colleges, and exchange knowledge about surveys, interviews, focus groups and a range of research opportunities and problems.

SUMMARY OF PRESENTATIONS BY THEME

AAI - Anger & Aggression Issues

A1 - B1 - C1 - C20 - D1 - F1

AAN - Abuse & Neglect

C2 - D2 - B18

ADO - Adoption

A2 - E2

APP - Advocacy & Public Policy

A3 - B3 - C3 - C6 - D11 - E10

CBC - Community-Based Care

A4 - A10 - B4 - C4 - D3 - D4 - E3 - E4 - F2

CCD - Cultural Competency

A5 - A20 - C5 - D5 - E5 - E6 - F3

CSP - Child Sexual Predators

B6

CYH - Child & Youth Homelessness

A7

ECC - Early Childhood Care

A8 - A21 - B7 - C7 - C8 - C9 - D6 - D7
D8 - E7 - E8 - F4 - F5

EFA - Epilepsy

A14 - A23 - B2 - B9 - B12 - B13 - C11
C18 - D10 - E9 - F13

EPI - Ethical Practice Issues

A22

FCA - Foster Care

A13 - A25

FCP - Family Centered Practice

A11 - B10 - C10 - C12 - D12 - F6 - F7 - B18

GCA - Group Care

A12 - A24 - B11 - D13 - E11 - F8 - F15

IHC - In-Home Care

A9 - B8

JJU - Juvenile Justice

B5 - C15 - C21 - D14

MIL - Mental Illness

D9

OBE - Obesity

A6

PST - Professional Standards

A16 - B15 - B16

RTI - Research & Training Initiatives

A17 - B17 - C13 - C16 - C17 - E12 - E13
E17 - E18 - F9 - F10

RTR - Residential Treatment

A18 - C14 - D15 - D16 - E1 - E14 - E16 - F11 - F12

SAB - Substance Abuse

F14

SED - Special Education

A15 - A19 - B14 - C19 - E15

WEDNESDAY, MAY 27

1:30PM - 3:00PM

A1

Relapse & Recycle: Empowering Youth Through Change (Trans-theoretical Model of Change)

The workshop will consist of an overview of the trans-theoretical model of change which consists of five stages, pre-contemplation, contemplation, preparation, action and maintenance. This process is not linear therefore addresses the idea that individuals "relapse and recycle through the stages" establishing a continuum. Professionals and high-risk populations are able to explore a holistic approach to supporting change. This workshop is interactive and experiential, examining the idea of change in relation to violence/substance misuse. The educational elements provide a model, tools to facilitate a process of change when working with youth.

Marjorie McQuarrie
Vancouver Coastal Health Authority
British Columbia, Canada

A2

Mobilizing Church teams to meet the needs of Orphans

Ho Jala Peo (Sotho for plant the seed) started an initiative to meet the needs of orphaned and vulnerable children (OVC) by providing them with families. This started with a study on the needs of parents who took or want to take these children in as well as a community profile on the existing services for OVC. In the workshop the methodology will be explained together with the fieldwork tools. The results of the study and subsequent program planning will be discussed. Attendees will walk away with a handout on a typical OVC community profile and SWOT analyses with program planning and explanation of the Social Outcomes Framework that assists with program planning.

Rika Swanzen
Private practice/consultant
Gauteng, South Africa

Tracey Webster
Ho Jala Peo
Gauteng, South Africa

A3

Youth Advisory Councils: Engaging Youth through Celebratory Learning

Using celebratory learning methods, this workshop will provide practical tools and strategies for engaging youth through lessons learned from Maine's Title V CSHCN model. This interactive session will model techniques that honor diversity of learning needs, knowledge levels, and personal participation styles by embedding elements of "cooperative learning". This session will illustrate the critical need to create environments that are safe and encourage honest discourse. Participants will actively engage in techniques that honor diversity of learning needs, knowledge levels, and personal participation styles. This workshop is something different, and will have participants getting up, moving around, discussing and HAVING FUN!

Mallory Cyr
Toni Wall
Debbie Gilmer
Kathryn Markovchick
Maine Support Network
Maine, USA

A4

Making Integrated Case Management Really Work

This workshop examines our practice in integrated case management and having successful outcomes for clients. What are the keys to real success? What are the benefits to clients and how do they experience client-centered practice? As professionals how do we conduct ourselves? How do we respect and honor clients in the process of serving them? If we believe that we really want to make a change in the lives of children and families we can start by learning how to work together across disciplines and service streams. The workshop will break down components and discuss the roles and skills to implement good case management practice.

Nanette Taylor
Hollyburn Family Services
British Columbia, Canada

A5

Cultural Alertness

The objectives of this workshop are to begin the process of examining the cultural assumptions by which individuals lead their lives, to explore the ways that predominantly mono-cultural education and life experiences create limitations and to encourage learning about one's own and others' cultural backgrounds. The activities in this workshop will promote learning about cultural assumptions using three fun and interactive activities to provide the participant with additional cultural alertness.

Julie G. Alemany
Nova Southeastern University
Florida, USA



WEDNESDAY, MAY 27

1:30PM - 3:00PM

A6

I'm fat...so who cares!?

Adolescence is commensurate with changes in self-esteem which can be complicated by the presence of overweight and obesity. This workshop will briefly outline some of the implications of overweight and obesity for adolescents and will engage participants in looking at ways to identify and manage self-esteem issues and potential psychological consequences. It will look at a whole family approach to offering support in managing healthy food choices and encouraging lifestyle change. They will learn about the "Big 5" - things to do on a daily basis to contribute to lifestyle change.

Ronalda Hoffman
David Bennett
The Children's Hospital at Westmead
New South Wales, Australia

A7

Children/Youth Homelessness and Teen Pregnancy

Child and youth homelessness can be described where children under age have been neglected owing to lack of good parenting. Furthermore, Teen Pregnancy is described as unwanted pregnancy by youths either as a result of persuasion beyond their control or as a result of lack of good education. Additionally negative social impact is still visible in the lives of youth in post conflict countries in the world. This workshop will explain how to bring up children not out of force, but encouragement. Attendees will receive booklets and handouts that will demonstrate good parenting and good children behavior.

Beamie Seiwoh
Peter Pablo Belinda
Fourah Bay College – University of Sierra Leone
Sierra Leone, Africa

A8

Simply Touch: Integrating Touch into Early Intervention

Dr. Elaine Fogel Schneider presents a didactic and interactive workshop. Participants will explore the many benefits of touch, "first-hand", as they learn how to apply various touch strategies into early intervention programs and practices through interactive experiences. Attendees will learn the importance of touch for child growth and development, be able to list five benefits of integrating touch into early intervention and demonstrate 2 strategies they can use with children receiving early intervention services. Participants will walk away with new skills, resources, information, and tools to engage in the practice of touch and simple massage activities.

Elaine Fogel Schneider
Nova Southeastern University
California, USA

Phil Patterson
California State University, Bakersfield-Antelope Valley campus
California, USA

A9

Developing Evaluation Capacity in the Child and Youth Care Field

How do we ensure that the programs we deliver are of high quality and effective? This workshop will describe a successful project that developed an evaluation system for a nationwide system of child and family serving agencies. This workshop describes how this system, and the tools developed, can be applied to the field of child and youth care, to help ensure high quality and effective programs. At the end of this workshop attendees will have current information and resources on evaluation of child and youth care programs; a case example for a successful nation-wide evaluation system to use as a model.

Peter Gabor
University of Calgary
Calgary, Canada

Carol Ing
Lethbridge Community College
Alberta, Canada

A10

Relational Youth Work: Making the Critical Connection

What are the keys to real success? What are the benefits to clients and how do they experience client-centered practice? As professionals how do we conduct ourselves? How do we respect and honor clients in the process of serving them? If we believe that we really want to make a change in the lives of children and families we can start by learning how to work together across disciplines and service streams. The workshop will break down components and discuss the roles and skills to implement good case management practice.

Natalie Landry
Acadiana Youth, Inc Maison De Mere
Louisiana, USA

Angie Courville

Frank Eckles
CYC Certification Institute
Texas, USA

A11

Training Parents to teach Children about Sex

Presenters of this workshop will make attendees aware of the need to empower parents to teach their children about sex in a realistic way and provide a safe context for children to discuss sex without fear of being judged or criticized. Participants will leave with information, tools to engage, and a greater awareness of the need for this kind of education. Participants will be given the tools for parents to equip their children with decision-making skills regarding their sexuality and their bodies.

Clyde Ainsworth Bailey
Nova Southeastern University - FSEHS
Florida, USA

WEDNESDAY, MAY 27

1:30PM - 3:00PM

A12

Providing Shelter from the Storm: The Youth Workers Role in Trauma Informed Care

Recently, there has been a great deal of focus on the adverse effect trauma has on healthy development. This information is important to those providing care for young people in out-of home care. Learn what is meant by Trauma Informed Care and the role youth workers can play in providing the essential curative activities and interactions necessary to heal young people who have experienced trauma. This workshop will explore the significant role youth workers play in the interventions that work best to counteract the effects of trauma on youth people in our care

Jean Carpenter-Williams
The National Resource Center for Youth Services
Oklahoma, USA

A13

Identifying the Psychological Needs of Children in Foster Care

This workshop 1 1/2 hour presentation is directed at child protection workers, child advocates, educators, parents, and mental health professionals to provide them with an understanding of the psychological needs of children in foster care system. Since children in foster care deal with many complex issues, focus aimed those professionals who work with this population to expand their understanding of the psychological implications of this process on children. Participants from a variety of disciplines will be able to integrate this knowledge into their professional practice.

Maribel Del Rio
Barbara Garcia-Lavin
Terri Mortensen
Nova Southeastern University
Florida, USA

A14

Community Collaborations for a Transitional Independent Living System of Care

This workshop will share the success and innovative concept of community based care for transitioning youth of the dependency system. Information about building partnerships with parties outside of the typical social service world and engaging members of the business community, local landlords and property builders, and many other untapped resources for the benefit of the youth. Tools and resources and information will be provided about successful community engagement and participation in the TIL System.

Elizabeth Wynter
United Way of Broward County
Florida, USA

Kristen Guerrise
Junior League of Greater Fort Lauderdale
Florida, USA

A15

Difficult Transitions: An Innovative Study of the Education of Students At Risk in Kentucky

Students in alternative education settings experience much relocation, frequent movement and numerous transitions between traditional and alternative school settings. This frequency of movement presents one of the major barriers to learning for this traditionally overlooked population. This session will examine and discuss the results a one year mixed methods descriptive study on transition of students being served in state agency alternative education programs. The participants will learn about the school culture of both the nontraditional and the traditional school, where many of the students are scheduled to return. Student, teacher and administrator voices provide us with recommendations for confronting, navigating and understanding the complex transition process for this important population of youth in care.

Norman W. Powell
Eastern Kentucky University
Kentucky, USA

A16

Becoming an Employer of Distinction: Promoting a Healthy Workplace

An Employer of Distinction is one who views employees as vital and integral to the organization's success. Managers and frontline Child and Youth Care Workers will share their knowledge and experiences on becoming and maintaining a healthy organization. This presentation will focus on identifying best practices in human resource management, which includes leadership, innovation, creativity and a fundamental belief in the value of a healthy, safe and motivated workforce

Charles Thomasen
Edwin Riggs
Greg Squires
Waypoints
Newfoundland and Labrador, Canada



WEDNESDAY, MAY 27 1:30PM - 3:00PM

A17

Who's turning up the heat?

Supporting CYC graduates to encounter the changing Climate in Residential Child and Youth Care practice. The purpose of this workshop is to share what is to share best practices for Child and Youth Care training and how that may translate into the College education arena. This workshop will offer a framework faculty has begun to develop supporting the continuing education of Child and Youth Care graduates. Questions will be raised about how to support the development of lifelong practitioners? Successes that a rural college is having delivering a CYC education program balancing the needs of the college and the needs of the employer will be explored.

Kelly Shaw
Jeffery Reid
Margo Eaton
Nova Scotia Community College
Nova Scotia, Canada

A18

Life Story Work with Traumatized Children

An introduction to the provision of life story work and the 3 stages required to ensure effective outcomes. An explanation of the residential treatment program used within SACCS in the UK to deliver recovery for traumatized children. Attendees will have case examples, techniques demonstrated, and handouts. Based work over the last 12 years of the Life Story and the book - The Child's Own Story - Life Story Work with traumatized children. Attendees can use examples presented for communicating with children, to allow children opportunity to consider their identity and practical ways to use material effectively.

Richard Rose
Mary Walsh Institute SACCS
England, UK

A19

Developmental Screening at Well-Child Visits

Ontario, Canada Presenters will share findings of their study to investigate the feasibility and effectiveness of incorporating a parent-completed developmental screening tool, the Ages and Stages Questionnaire, into the 12- and 24-month well-child visits.

Hollie Hix-Small
Ryerson University
Ontario, Canada

A20

Making it Count: Understanding Inequalities and Privileges in Youth Work

Nearly everyone in the US experiences a position of privilege in at least one identity area; socio-economic status, disability, race/ethnicity, sexual orientation, etc. Many of us experience a disproportionate amount of privilege. As direct service youth workers, administrators, and educators, it is important for us to be aware of our positions of privilege and know how to responsibly use them. The purpose of this simulation exercise and reflection activities is to understand how privilege influences the work we do, and how we can responsibly use points of privilege for the benefits of everyone- particularly for the youth in care.

John Korsmo
Western Washington University
Washington, USA

A21

Taking on the Take Down: Critically Reflecting on an Ethical Dilemma from Multiple Perspectives

From an ethical perspective, what are the different ways that might be available for interpreting, analyzing and responding to the inevitable ethical tensions that arise when responding to a youth who is threatening violence? Using the example of the youth who is threatening violence in a group care setting as our point of departure we will share our best thinking about some of the strengths and limitations of various models and resources for enhancing ethical discernment and deliberation in CYC practice.

Jennifer White
Mackenzie Dean
Catherine Hedlin
Brenda McGowan
Jonathon Morris
University of Victoria
British Columbia, Canada



WEDNESDAY, MAY 27 1:30PM - 3:00PM

A22

Improving Healthcare Access for Medically Underserved Children with Epilepsy

This workshop will address the theme of improving Healthcare Access for Medically Underserved Children with Epilepsy. This discussion will focus on three key topics: The Many Faces of Epilepsy: Enhancement of the Co management of care for children and youth with epilepsy by primary care physicians and pediatric neurologists, with the introduction of the Medical Home concept: The dilemmas of obtaining health coverage and health care for children and youth lacking legal medical documentation.

Patricia Dean
Miami Children's Hospital
Florida, USA

Judy Clauser
Epilepsy Foundation
Florida, USA

A23

Teach Children and Families Social Intelligence Skills

Current research regarding social emotional learning will be presented. Participants will learn that children and their parents need to learn effective skills in order to become self-managed. The Peace4Kids Model, a derivative of Aggression Replacement Training, will be presented that is evidence-based and can be used for prevention, early intervention and intense intervention. Participants will learn ways to teach emotional intelligence, anger management, social skills and character/ethics. An effective parent/family program will be included. Participants will take away knowledge of the current research, specific activities that can be used with kids and families and resources.

Sara Salmon
Center for Safe Schools and Communities
Colorado, USA

A24

Permanency: Factors Contributing Toward Successful Integrations

This workshop will help you become more familiar with all aspects affecting an integration plans that have proven to be effective. Attendees will develop an understanding of the intensity of moving a child from a home he/she is familiar with to a permanent home he/she has been recently been introduced to. This process involves emotional, psychological, and physiological components to the child, workers, natural families sending and receiving families. There will be examples outlining strategies that create collaborative plan and a frame of doing so. Participants will know how to assist all parties involved in concurrent planning to manage the losses and gains related to a move.

Susan Silva
Natalie Coull
Batshaw Youth and Family Centers
Quebec, Canada



WEDNESDAY, MAY 27

3:30PM - 5:00PM

B1

Strengthening Family T.I.E.S. with A.R.T.

This workshop will demonstrate an expansion of Aggression Replacement Training® (Goldstein, Glick and Gibbs 1998) when applied in a family/systems context. The potency and potential for transfer of this cognitive behavioral/psycho-educational program is magnified when the approach includes the training of A.R.T.® with parents and significant others with the youth. We refer to this training as Family Training In Essential Skills or Family TIES. The presentation will provide a session-by-session description of the model, integrating some interactive activities and a brief review of research to date

Kim Parker
Monique Laverdure
Sandu Strunga
Batshaw Youth and Family Centers
Quebec, Canada

B2

It Might Be Epilepsy

This panel will provide seizure recognition and first aid geared toward law enforcement personnel or other possible first responders as the primary audience. Panel members will discuss: The need for correct assessment of situations by law enforcement personnel or other first responders in order to respond appropriately when encountering individuals experiencing seizures. Personal examples of situations when law enforcement personnel or other first responders have assessed a seizure related situation incorrectly.

Sandy Ceniseros
Kim Simmons
Marci Simmons
Epilepsy Foundation of Dallas
Texas, USA

B3

Community Youth Mapping

Over 130 communities from around the country and in several other countries, have committed to the CYM process. This session will cover: an overview of Community Youth Mapping and the planning steps involved; overview of technology used to maintain information; sharing specific experiences and challenges from other cities; and examples of how youth, parents and other community leader involvement has helped shape the process and impact policy on the local level. Participants will receive a free CYM Guide and Toolkit on CD.

Raul Ratcliffe
Academy for Education Development
Washington DC, USA

B4

Community Child and Youth Care: Principles and Practice

Youth Care, illustrated with examples from Ray-Cam Community Centre in Vancouver, BC, Canada. Core elements of community based Child and Youth Care include building partnerships with parents, schools, service providers and youth while helping to resolve individual problems and building capacity. Participants will walk away from the session with a conceptual understanding of the practice of child and youth care in the community, an appreciation of the role of children, youth, families and community in program development and an image of a community centre in action.

Gary Tennant
Dave Martin
Douglas College
British Columbia, CANADA

Alex Vasiljevic
Ray-Cam Cooperative Centre
British Columbia, Canada

B5

Volunteering with the Youth Offending Service as a Community Panel member

An interactive presentation to share our experiences of bringing together the private childcare sector with higher education to provide a specifically designed practice related Degree for working with traumatized

Janet Nordoff
Glyndwr University
North Wales, UK

B6

Understanding and Responding to Children's Sexual Behavior

A training designed to promote adult understanding of children's sexual behavior. It will also help foster parents to become more aware so they could intervene earlier in the development of sexuality abusive patterns. Covering: Rationale for early intervention in sexuality explorative interactions. Identification strategies. Basic assumptions of sexual learning. Language and behavior which warrant intervention. Criteria for evaluating sexual interaction of children and intervention strategies.

Madeleine Rybicki
Holy Family Institute
Ohio, USA

WEDNESDAY, MAY 27

3:30PM - 5:00PM

B7

Preparing Young Children for School

This workshop will review educational standards and domains necessary for children to have before starting school. The following domains will be covered: cognitive skills, social/emotional, independent functioning, and motor as well as many more. Participants will leave with strategies on how to teach these skills by utilizing hands on activities and language. And will walk away with new teaching strategies and activities that can be done with all children to prepare them to attend school at 5 years old.

Terri Shermett
Broward County Public Schools
Florida, USA

B8

Stories in Family Support Practice: Strategies to Implement a Community Based Family Support Program

Waypoints is a community based organization that works with young people and their families. The Waypoints' Family Support Program helps to strengthen families through relationship based life-space intervention. The Family Support Team and the families that they work with experience success together and build on this in order to increase family functioning. Participants in this workshop will be given an outline of this multi-faceted relationship approach, as well as the concrete tools used to support the families' growth. Participants will learn strategies and interventions for working with families through a strength-based relational approach.

Andrea Furlong
Sonja LeDrew
Waypoints
Newfoundland and Labrador, Canada

B9

Community Health Workers – Promotores, your best option for Community Outreach

This workshop will emphasize the importance to work with Community Health Workers – Promotores, in the implementation of community based and cultural competent outreach strategies. Attendees will be provided with the necessary tools to start partnership or collaborations at local levels, on how to conduct train the trainers' sessions and evaluate outreach outcomes. They will also walk away with a renovated idea of Community-based Care and Cultural Competency/Diversity for epilepsy throughout community outreach including new skills, resources, and tools.

Martha Londoño
Health Education Consultant
California, USA

Patricia Dold
National Center for Farmworker Health
Texas, USA

B10

DETOUR: How Families Lose their Way and the Impact on Children

Thirty years of teaching Family Systems to Child and Youth Counselors has culminated in a book that describes the relationship journey that families take and how it molds their children's personalities and behavior. This journey may take a "detour" and travel down a road that includes relationship challenges in the family resulting in children with symptoms. This workshop provides an overview of the book that is written with Child and Youth Counselors in mind: how they learn, what they need to know and how to apply it to the families and clients with whom they work.

Franceen Blidner
Fanshawe College
Ontario, Canada

B11

Life Space Crisis Intervention & Aggression Replacement Training: A Multi-Modal

This workshop will provide an overview and the benefits of the combined Evidence-Based Competency Development practice Aggression Replacement Training (skills for children) and Life Space Crisis Intervention (skills for staff). Professionals will be provided with an overview of the most current practices that can best benefit those children in need including: supervisory tools to assist staff with program monitoring, overview of Aggression Replacement Training., an Overview of LSCL, and a model for integration of both practices.

Mark Amendola, LCSW
Perseus House, Inc
Pennsylvania, USA



WEDNESDAY, MAY 27 3:30PM - 5:00PM

B12

Educational Supports for Youth in Care

In the past decade an average of only 21% of BC's Youth in Care have graduated from high school. This is appalling given the number of life opportunities lost to early school leavers. At this workshop, participants will learn about a project developed to improve the potential for this population and its significant components. A significant component was listening to the youth who had graduated while in care, as well as the subject group. This workshop will review the supports and services provided and the differences made.

Maple Melder Crozier
University of the Fraser Valley
British Columbia, Canada

B13

Youth Empowerment: Their Eyes, Their Voices, Their Terms

In this workshop the philosophy of Youth Empowerment is put into action. We will present a project completed by a group of youth who have been and transitioned out of care. This project represents the experiences of youth through their eyes, through their voices and on their terms. The hope is that by attending this workshop, practitioners will be sensitized to the needs of youth as they leave care. Youth Empowerment is a philosophy that many child welfare practitioners adhere to but often does not get translated into action. Information provided will help them implement youth empowerment initiatives in their own agencies.

Linda Piano
One youth in care and one alumni of care
Batshaw Youth and Family Centres
Quebec, Canada

B14

Journey into Healthcare: Stories from Aged-Out Foster Care Teens

In this workshop will be based on my doctoral dissertation which will be a focus group qualitative study to understand the experiences of the aged out foster care teen and their healthcare experience. Participants will gain understanding about the plight of the foster care aged out teen as evidenced by the following outcomes: 1. increasing awareness of Foster Care issues affecting Florida; 2. ways in which we may assist foster care through education, research and practice; and 3. provide information for the nursing profession, teaching profession and other helping professions to recommend, design, and implement measures and resources to help aged out teens meet their extensive healthcare needs. Healthcare, as will be described in the course of this workshop, includes the availability of resources for the prevention and treatment of illness, as well as addressing the psychosocial and emotional needs of foster care children.

Elizabeth Levine
Miami Dade College
Florida, USA

B15

High School to College Transition for Learning

As the number of students with learning disabilities attending colleges and universities has grown dramatically over the past thirty years, so too have the number of issues faced by students, parents, and educators. This workshop will focus on education and civil legislation related to individuals with disabilities entering the college setting. Participants will be provided with knowledge of transition issues, accommodations acquisition, and allocating/receiving support services for these students. Issues covered include high school exit exams, college admissions testing for students with learning disabilities, changes in the laws and the documentation requirements for high school and college students.

Analisa L. Smith
Nova Southeastern University
South Carolina, USA

B16

Insights Regarding Professional Boundaries from Female Youth in Residential Treatment

This workshop will present the findings from a qualitative case study conducted in order to obtain a deeper understanding of professional boundaries as they relate to female teens in a residential treatment program. In addition, ample time will be allotted for an interactive discussion regarding boundary challenges faced by child and youth care professionals. The main goal of the workshop is for youth care professionals to have an understanding and appreciation of professional boundaries from the perspective of female teens residing in residential treatment.

Pamela A. Richmond
Mansfield University
Pennsylvania, USA

B17

Social Pedagogy in Residential Child Care in a Scottish Context

Creation of a social pedagogy program involves utilizing the knowledge and qualifications of the staff in residential childcare settings. This data and knowledge is used to determine a baseline and then the program allows for learning from the deviations from the baseline. The program is based on work in Germany and the Nordic countries. Colleagues in the Thomas Coram Institute in London have been developing a program to bring social pedagogy into England and we are now working alongside them to institute a similar program in Scotland. I believe that this program will be of immense interest to American Practitioners.

Andrew Hosie
Scottish Institute for Residential Child Care
Scotland, UK

WEDNESDAY, MAY 27 3:30PM - 5:00PM



B19

Working Together to Strengthen Families

This presentation and panel discussion will focus on strategies used to prevent child abuse and neglect from a funder level to the direct service level. Additionally, the panelists will discuss ways in which Broward County stakeholders and service providers collaborate to strengthen families within the community. The Broward Sheriff's Office will discuss the incidence of child abuse in the county and the role child abuse investigators have in determining risks of the family. They will also discuss how collaboration efforts have helped in investigations and follow up. The local Community Based Care Lead Agency, ChildNet, will explore the goals of keeping children with their families and expediting permanency for children in the child welfare system. They will provide information on how they have re-aligned funding priorities to expand reunification services which can help in maintaining stability and expediting case plan goals. Additionally, they will show how collaborating with other funders has helped in focusing their efforts to streamline services. The Broward County Department of Children and Families will discuss their role in services, funding, and oversight in prevention and child welfare. The Children's Services Council will highlight strategies used in funding Family Strengthening programs specifically targeted at reducing child abuse and neglect within the County. CSC will also discuss working with other key stakeholders to create a collaborative method of funding and providing services. Local providers of Family Strengthening Programs will relate how they receive referrals and identify at-risk families. They will discuss strategies they use to help strengthen the family unit and resources they have to help prevent child abuse and neglect. Additionally, they will show how working closely with funders, child protective investigators, and other agencies has helped them provide effective services.

Melissa Stanley
Children's Services Council
Florida, USA

James Walker
Broward Sheriff's Office Child Protective Investigation Section.
Florida, USA

Larry Reien
ChildNet
Florida, USA

Kimberly G. Welles
DCF - SE Region Family Safety Programs for Broward and Palm Beach
Florida, USA

Stephanie Hudak, LCSW
North Broward office of the Institute for Family Centered Services (IFCS)
Florida, USA

Andrea Hall
Gulf Coast Community Care Inc.'s Family Skill Builder's Program
Florida, USA

B18

Intergenerational Supervision: Opportunities and Challenges

In child and youth care settings, individuals of all ages are continually interacting. Each generation shares similar life views with distinct expectations of work, and even working styles. Supervisors need to know how to help intergenerational groups to communicate or even get along. This workshop will explore communication across generations, supervisory intergenerational issues and focus on how to facilitate effective and harmonious interactions on the work team to minimize clashes.

Carol Ing
Lethbridge Community College
Alberta, Canada

Peter Gabor
University of Calgary
Alberta, Canada

THURSDAY, MAY 28 10:30AM - 12:00PM

C1

Childhood Peak Experiences: Culture, Impact and Life Paths

Through a series of studies initiated by Dr. Edward Hoffman, Yeshiva University, a group of colleagues have been gathering data on childhood peak experiences (CPE) in a variety of cultural contexts using a simple questionnaire. The team has identified a number of CPE types, common across contexts but in different proportions in different populations. This study focuses on a consideration of the relationship between peak type and life path choices with particular attention to respondents from education and human service fields.

Daniel Scott
School of Child and Youth Care
University of Victoria
British Columbia, Canada

C2

Private Practice in Child & Youth Care: A Twenty Year Experiment . . . Lessons Learned, A Million Hours Later

This workshop will provide a review of Bartimaeus' twenty years of experience providing Child and Youth Work services, including stories and experiences, highlighting the ability of Child and Youth practitioners to meet the varied and complex needs of children, adolescents and their families. Developing "true" partnerships and the importance of matching skills, expertise, interest and availability to each and every situation will be reviewed as the key to successful, quality practice. Private practice "myths" will be examined, as well as "lessons learned" in the development of private practice over the years. Attendees will walk away with a renewed passion for career development!

Pat Gaughan
Bartimaeus Inc,
Ontario, Canada

C3

Take this Job and Love it

Attendees will learn what makes up a profession and how to empower themselves to advocate for the field of youth work and put their love for this profession into action. It will also teach attendees how to connect with national certification and how to raise revenues to support their advocacy, to include credentialing and training. Attendees will leave thinking about youth work as a profession and how they can begin advocating for the field in their perspective jurisdictions. They will walk away with a better understanding of what a profession is and where to access appropriate resources.

Jeff Kreeb
Norris Adolescent Center
Wisconsin, USA

Jody Rhodes
The Association for Child and Youth Care Practice, Inc
Wisconsin, USA

C4

Look At Me! Steps to foster "Self Aware" Child and Youth Care Workers

This self-reflective workshop addresses certain skill sets while emphasizing the importance of youth work professional development by engaging in self-awareness and reflective youth work activities. This class that demonstrates best practice methods such as relationship building, empathy, and reflection while infusing techniques and ideas through out to foster self-care as it relates to burn-out and turn over. Youth workers will experience a broader sense of self ultimately contributing to the professionalism in the field of child and youth care work.

Gevon Daynuah
Youth Work Learning Center
University of WI-Milwaukee
Wisconsin, USA

C5

Helping children of colour become more resilient

This workshop will help participants understand the issues that children of color face. They will learn that resilience is the ability to handle stress and adversity well, and that children can develop resilient thinking characterized by flexibility, problem solving, and empathy. The main focus is that Resilient thinking can be learned. It will benefit the participants to understand the behaviors of children and why one child in a family can succeed while the other fails. This is often because one is more resilient than the other and this skill may have been missed in the bonding phase of life.

Audrey Palmer
Durham Children's Aid Society
Ontario, Canada



THURSDAY, MAY 28 10:30AM - 12:00PM

C6

Child and Youth Care Worker Professional Certification

This workshop will describe the development and implementation of the national certification program in the U.S. and provide an overview of several Canadian certification initiatives. Implications for addressing the current workforce crisis, lessons learned, and future opportunities for collaboration and development of the field to raise standards and awareness of the contribution of child and youth work will be explored. This session will be of special interest to trainers, educators, program administrators and public policy planners.

Dale Curry
Kent State University
Ohio, USA

Frank Eckles
CYC Certification Institute
Texas, USA

Carol Stuart
Ryerson University
Ontario, Canada

Madeleine Rybicki
Holy Family Institute
Ohio, USA

C7

Beyond Fun: Using games and activities to teach

Play can teach! Using activities to engage kids makes the walls fall and gets the message through. In this fun and exciting hands-on workshop, participants will learn multiple new games, initiative tasks and activities that they can immediately implement with youth in their own environment. Activities to be shown are taken from Preparing for Adolescence and Social Success (The PASS Program), a highly popular activity based social and character education program delivered to over 10,000 youth in Canada.

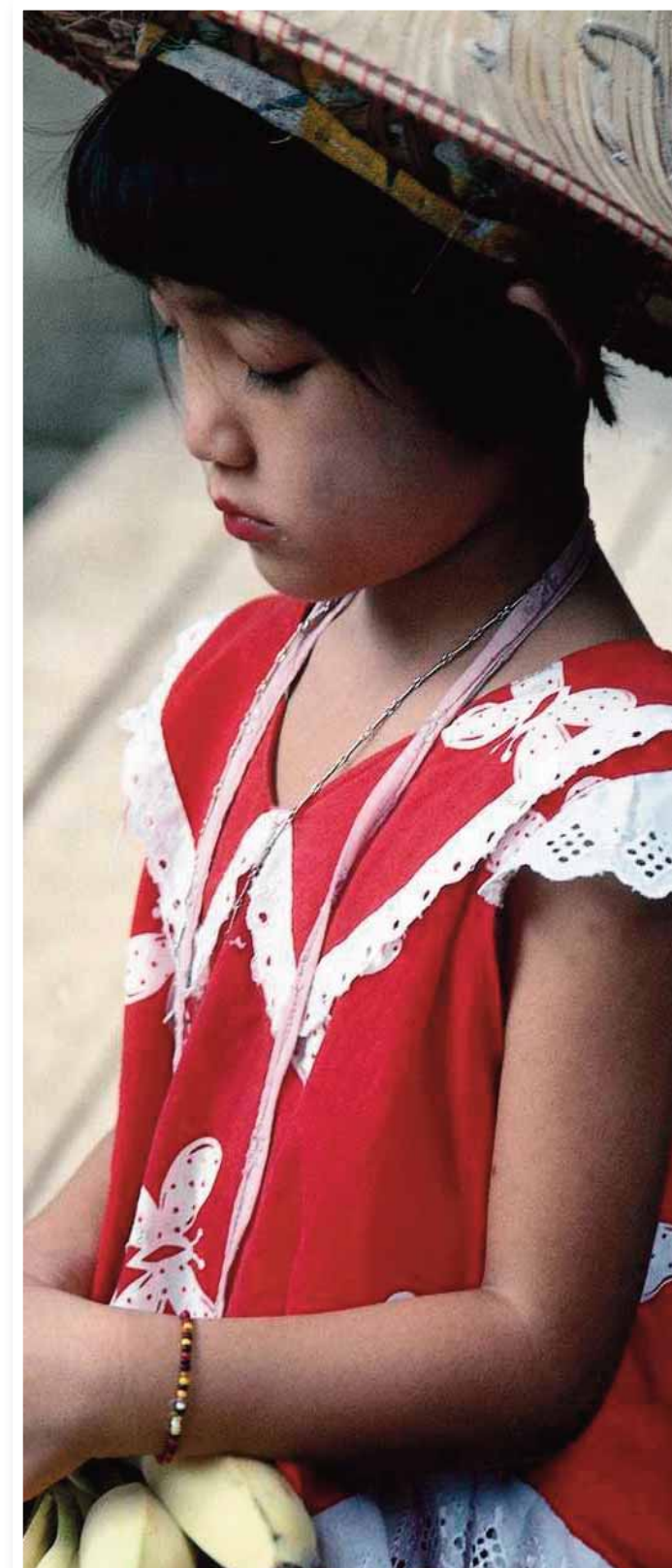
Andrew Middleton
Bartimaeus, Inc.
Ontario, Canada

C8

A Family Literacy Program for a Latino Community

Family Literacy Academy provides literacy instruction to Hispanic families. The program is a fundamental building block towards empowering immigrant children and families to succeed in the United States. The program focuses on literacy skills for the entire family. The workshop will provide participants with tools to foster a sustainable family literacy program. Key elements and strategies will be analyzed and discussed during this workshop. The goal of the Family Literacy Academy is to open communication between family members and help to re-establish the bonds families had before moving to the United States.

Danette Lajo
Hispanic Unity of Florida, Inc.
Florida, USA



THURSDAY, MAY 28 10:30AM - 12:00PM

C9

The use of Dialectical Behavior Therapy in a Residential Treatment Setting as part of a Comprehensive Restraint Reduction Initiative

This workshop will provide a comprehensive plan for reducing restraint in residential treatment including the use of Dialectical Behavior Therapy (DBT). DBT assists the clients in learning skills that help them regulate their emotions, reduce pain and suffering and increase their interpersonal skills. The workshop will provide tools for staff to use specific to decreasing restraint, while also increasing skill acquisition and maintenance for the youth. Specific resources and guidelines and a specific step-by-step process --- "how to manual" for the development of a comprehensive restraint reduction initiative including integration of DBT will be provided.

Beth A. Marcellino
John K. Dunning
Catholic Charities / Parmadale
Ohio, USA

C10

Developing Caregiver Competencies: Learning Anytime, Anywhere

This workshop provides about resources developed to employ distance learning technology to increase foster parents access to high quality professional development. Participants will become familiar with the PRIDE Digital Curriculum (PDC) project that uses distance learning technologies to allow resource parents to take advantage of asynchronous instruction to build skills, meet continuing education requirements for re-licensure or complete a professional development sequence in a specialized area. The session will feature a demonstration of the media-rich (graphics, audio, video, and multimedia) approach to learning that caters to visual, auditory, and tactile learners.

Michael Polowy
Del Hager
Danella Soeka
Governors State University
New York, USA

C11

Activities animation & programming workshop for child and youth care professionals

This workshop will allow the child and youth care professional the opportunity to learn new skills in animation and programming of activities, groups, games. We will also look at therapeutic activities and how they can help in residential service. (Cooperative games, Individual programs, group programs). The workshop is very interactive allowing the participants the opportunity to try new skills. You can discover more about a person in an hour of play than in a year of conversation!

Sam Barile
Leo Ferguson
Batshaw Youth and Family Centers
Quebec, Canada

C12

The Doable: Practical Applications for Using Restorative Practices with Children Under 12

This session focuses on what are practical applications and restorative tools, which naturally arise when utilizing a Restorative framework with young children. Additionally, the presentation highlights the impacts and ways in which settings and systems that serve and surround children (mainstream and clinical) are transformed positively when utilizing Restorative Practices (RP). There will be a number of demonstrations of Restorative Practices applied in a various clinical and non-clinical settings and tools for implementing RP both individually and as a framework for culture change presented.

Rick Kelly
George Brown College
Ontario, Canada

Debbie Sliwinski
Etobicoke Children's Centre
Ontario, Canada

Mandi Mayhew.
"Peacemakers" Program in an Inner City School
Ontario, Canada

Nicole Hanlon,
After School and Summer School Program in the York Region.
Ontario, Canada

C13

Preparing & Teaching Children About Serious Health Issues Through Play-Seizure Man

This workshop will demonstrate through humor, a skit, and a costumed character (seizure man) what seizures look like, and the first aid steps to take to assist someone in seizure. Attendees will learn how to prepare and present the presentation for young audiences in seizure recognition and first aid. Young audiences enjoy this teaching method and will gain new skills and resources for presentations.

Caroline R. Foster
F. Mitchell Garrett
Epilepsy Foundation
Alabama, USA

C14

Early Signs of Autism

Participants will get an understanding on what is autism and how their disorder affects their ability to function in all aspects of society. Furthermore, they will learn the typical developmental stages of young children and the early signs of autism. Legal obligations and responsibility to educate children with autism and discuss local resources that are available to children and families will be reviewed.

Terri Shermett
Broward County Public Schools
Florida, USA

THURSDAY, MAY 28 10:30AM - 12:00PM

C15

Bringing Together the Private Childcare Sector with Higher Education

The study took place in the United States. This workshop will benefit attendees by sharing one approach to identify and refer children and families who may benefit from early intervention services in partnership with health professionals. It is also an opportunity to network with others interested in conducting similar work in Canada or internationally.

Janet Nordoff
Glyndwr University
North Wales, UK

Richard Rose
Mary Walsh Institute at SACCS
Shropshire, UK



C16

Grounded Theory in Child and Youth Care

Grounded theories are powerful tools for practice. This workshop will introduce Grounded Theory research methodology and its relevance to the field of child and youth care. The discussion will focus on the presenters, of GT research studies; one a theoretical framework for understanding the dynamics of good residential care, and the other on understanding therapeutic environments in the lives of street-involved youth. The workshop aims to increase attendee, and knowledge of classical Grounded Theory and how it can be used as a research methodology in child and youth care.

Stephanie Griffin
James Anglin
University of Victoria
British Columbia, Canada

C17

Enhancing Access to Care & Treatment Options for Epilepsy

Families specialized medical care for children with long term health conditions including epilepsy often are either not aware of available specialized medical resources or encounter barriers to treatment. Cultural and language issues also exist and may limit access to specialty care. Through awareness, education, and quality improvement activities, improved systems of care can be realized and lead to positive outcomes for families impacted by epilepsy. This workshop will reveal strategies and tools that can be utilized in order to affectively enhance access to care and treatment outcomes.

Linda Brinker
Epilepsy Foundation
Illinois, USA

Kathy Finch
Epilepsy Foundation of San Diego
California, USA

C18

Dispelling the myths about ADHD

This presentation will provide an overview of the pervasive nature of ADHD and the accompanying social and behavioral problems which burden the affected child. The struggle of raising an ADHD child and its profound impact on the family unit will be examined. The presentation will outline some of society's key myths, misconceptions and misrepresentations about ADHD that exacerbate the conflict, stress and pain that are felt in the family putting not only the child at further risk but also the mental health of the family itself. Attendees will be sensitized to the harmful effects of society's attitudes on ADHD children.

Bluma Litner
Concordia University
Quebec, Canada

THURSDAY, MAY 28 10:30AM - 12:00PM

C19

CYC-Net and The Learning Zone: A Unique on-line Learning Resource

CYC-Net is the largest, free, on-line resource in the world for those who work with troubled children and their families. The Learning Zone, part of CYC-Net, is a unique online learning resource for the child and youth care sector - including foster carers. It provides free, flexible, innovative teaching and learning opportunities to suit a wide range of knowledge and skills backgrounds. In this presentation, participants will: Become familiar with CYC-Net and the Learning Zone, learn about new, free, internet based learning opportunities, and learn how to incorporate these resources into their daily learning in program, college/university and individual learning environments.

Thom Garfat

Learning Zone Network / CYC-Net
Quebec, Canada

Fiona Sinclair

Kibble Education and Care Centre/ Learning Zone
Scotland, UK

Leon Fulcher

International Consultant, Foster Care Associates, England and New Zealand.
Learning Zone Network Coordinator, Kibble Education and Care Centre, Scotland Chair, Board of Directors, CYC-Net

C20

NASKARZ (Never Again Steal Karz) Program

The NASKARZ (Never Again Steal Cars) program was designed for high-risk youth in Canada. Ram-Cam Cooperative Community Center and its partner organizations developed the program. In 2008 Vancouver Community College, Vancouver Police Department and ICBC joined the partnership recognizing its potential to reduce youth crime and to propel these same youth toward new opportunities for education, training and employment. Attendees will learn about the mechanics of NASKARZ as a best practice model and what it takes to implement NASKARZ as a community based practice. They will also learn about the outcomes for the youth participating in NASKARZ.

Alex Vasiljevic

Ray-Cam Cooperative Centre
British Columbia, Canada

Tim Hochen

Vancouver Police Department
British Columbia, Canada

Rory Morrison

Vancouver Community College
British Columbia, Canada

C21

Lessons from the Field: Conducting Research and Evaluation Focused on Children and Youth

The Academy for Educational Development (AED) conducts various research and evaluation initiatives focused on improving services and interventions for children, youth, and their families. The AED will highlight recent research initiatives and share key lessons learned from working with different target groups, US community settings, and overall research and evaluation goals and questions. The panel will be an interactive way to share lessons learned and to dialogue with other scholars.

Rose Renteria

Andrew Schneider-Muñoz

Jesse Gelwicks

Raul Ratcliffe

Academy for Educational Development
Washington DC, USA

C22

Relationship! Relationship! Relationship! The Cornerstone of Intervention. (A.R.T.)

Youth care interveners have used relationship to connect with children for decades. This workshop historically tours the attention given to relationship by Arnold Goldstein (Aggression Replacement Training), Mark Amendola, Haim Ginnott, Virginia Satir, Dr. Larry Brendtro and Martin Brokenleg (Circle of Courage), Yanus Korchak and others. Ann Masten's research on resilience of traumatized youth is also discussed, stressing the importance of relationship to their successes. Some examples of how to relate to youth using Gordon Neufeld's approach will be presented.

Robert Calame

Batshaw Youth and Family Centres
Quebec, Canada



THURSDAY, MAY 28 1:30PM - 3:00PM

D1

From cradle to adulthood: The lifespan development and treatment of reactive attachment disorder

I have worked with deprived and attachment disorders children and youth since 1981 in various settings. This workshop will incorporate work with deprived and attachment disorders children and youth since 1981 from 2 projects: one for education of European orphanage staffs and leaders and a parallel project for 3rd World orphanage development. Both are targeting the development of attachment-based caretaking practices. Anyone working with institutionalized children can benefit from the workshop. Practical methods are demonstrated and easily applicable in daily practice – both caretaking advice and inspiration for institutional development.

Niels Peter Rygård, C. Phys.

Erhvervspsykologerne
Aarhus C, Denmark

D2

"Stomping out Stigma" Summit Conferences for Youth

Building a community of care and acceptance for all people who may be seen as "different" is the goal of this workshop. Stigma is challenged by the effective development of collaborative community based partnerships. We will explore the necessary steps needed to deliver a dynamic session for youth that provides education about the effects of stigma. Registrants will explore the steps required to build a working group, train speakers and empower students to organize their own anti-stigma campaigns. The workshop will be used as a roadmap for other professionals to use in developing their own programs.

Bob Heaney

Whitby Mental Health Centre
Ontario, Canada

D3

Mirror Reflections: Impressions of Haitian Student Identity in Haiti and the U.S.

This panel will examine how Haitian children in Haiti and the U.S. understand their ethnic identity. The research on Haitian students in Haiti and identity is close to non-existent. There is a direct link between students' foundation of their identity in Haiti and its implication to the maintenance of their identity in the U.S. School can be an especially difficult time for many children as they struggle to meet extra academic demands and avoid new social pitfalls. The objective of the panel is to obtain an understanding of Haitian students' ethnic awareness in order to provide a framework to support their transition to U.S. schools.

Charlene Desir

Anathasie Libersite

Johane Metellus

NSU - Fischler School of Education
Florida, USA

D4

Ethics for Child and Youth Care Practitioners Part I

This 3-hour workshop is a participative training that will familiarize parishioners with the Standards of Practice for North American Child and Youth Care Professionals and their application to the process. In 1997 the ACYCP completed and approved a new ethic code for American child and youth care parishioners. Many states have adopted the code. The workshop includes a manual for each participant. This is the most widely CYC ethics curriculum in North America.

Frank Eckles

TYCCWA Senior Ethics Trainer
Texas, USA

D5

Adverse Birth Outcomes among Teenage Pregnancies: Age-specific Analysis of Unselected National Data in Taiwan

This workshop will evaluate the risks of adverse birth outcomes including low birth weight, preterm, and small-for-gestational age (SGA) among age-specific teen mothers. Among a total of 1,185,597 live births born to mothers aged 24 years or less, 151,259 (12.8%) were born to adolescent mothers aged 19 years or less. Mothers aged 16 or less experienced particularly high-adjusted odds ratios for all adverse birth outcomes of interest. The total sample may have overlooked the particularly high risks of adverse birth outcomes among very young adolescent mothers (16 years or less), who are especially vulnerable to such elevated risks.

Chi-Wen Chen

Fu-Jen Catholic University
Taipei, Taiwan

D6

Utilizing a User-Friendly child temperament sorter to address parenting and discipline concerns

A context for the importance of understanding child's temperament in parenting and child care decisions will be given together with an easy to use model for identifying a child's temperament. Results will be given together on research into the most common parenting and childcare concerns with an illustration of how these are answered through the use of this model. This tool helps in educating and proper treatment of the child. Each attendee will have their own profile done to experience accuracy of the sorter themselves, handouts on how to utilize the model, and information on further resources.

Rika Swanzen

Private Practitioner
Gauteng, South Africa

Hettie Brittz

Speech, Language and Hearing Therapist
Gauteng, South Africa

THURSDAY, MAY 28 1:30PM - 3:00PM

D7

Great Minds Think Alike!

This workshop will explain the program Great Minds Think Alike, an education awareness program for youth 13-18 diagnosed with a mental illness. It will provide youth with the skills necessary to take a leadership role in their own recovery and to aid others who suffer from the symptoms of mental illness. It helps youth learn to cope with their diagnosis and find success in their daily lives and provides easy to understand workbooks to learn from and refer to; opportunities to build relationships with other youth who have similar symptoms; and, despite the barriers, provides an approach to leading healthy and productive lives.

Deborah Rose
NAMI - The National Alliance on Mental Illness
Texas, USA

D8

Social Security Work Incentives and Employment Support Programming: The Secret Transition Toolbox

How can students with disabilities turn employment barriers into windows of career opportunity allowing them to move from dependence to independence? Come and find out! This hour and a half apprenticeship will allow you the opportunity to become craftsmen of advocacy, skilled in assisting students to build lives of self-sufficiency. Attendees will carry away a toolbox of knowledge of SSI and SSDI Work Incentives and how to use them to protect those benefits for as long as they are needed and knowledge of employment support programming and how to use it to maximize student potential for career success.

Greg Makely
Andrea Infante
Leonor Madrigal
The Epilepsy Foundation of New Jersey
New Jersey, USA

D9

Community Youth Mapping

This workshop will show how 130 communities from around the country and in several other countries, have committed to the CYM process. This session will cover: overview of Community Youth Mapping and the planning steps involved; overview of technology used to maintain information; sharing specific experiences and challenges from other cities; and examples of how youth, parents and other community leaders' involvement has helped shape the process and impact policy on the local level. This session is for people seeking to coordinate a Community Youth Mapping (CYM) effort in their own communities and learn how to use a Community Youth Mapping approach to engage youth and adults in the mapping of risk and protective factors; organize data using GIS and the CYM web based data management tool; utilize appropriate information dissemination strategies in their own communities.

Raul Ratcliffe
Academy for Educational Development
Washington DC, USA

D10

Negotiation strategies for collaboration with parents

This workshop will focus on the work of a team of graduate students that have been studying the everyday practice of child protection workers, many of whom were educated in child and youth care. These workers are experts at developing collaborative relationships with parents, under very difficult conditions, including work with mandated clients, families where there is abuse and neglect, and families who are economically distressed. This work is best portrayed, as negotiation, and workshop discussion will be about how these apply more generally to child and youth care settings.

Doug Magnuson
University of Victoria
British Columbia, Canada

D11

The OACCA Outcomes Data Project

This workshop will provide an overview of a three-year Outcomes Data Project developed by OACCA (Ohio Association of Child Caring Agencies). Data is being collected through a web-based system from out of home care programs such as residential care and foster care. Data collection and analysis are fundamental to future research and development of interventions that improve functioning for children and youth. The Outcomes Data Project will provide indications on what works and what is not helpful in the field.

Harry L. Blackmon
LHS Family and Youth Services, Inc
Ohio, USA

Bryan Brown
James Burkett
Ohio Association of Child Caring Agencies
Ohio, USA



THURSDAY, MAY 28 1:30PM - 3:00PM

D12

Strengths based strategies to address behavioral issues in residential programs

This workshop will present positive strategies to engage, motivate, and address behavioral issues in adolescents in residential programs. The strategies outlined are transferrable across disciplines, cultures, and were developed in rural northern context. The strategies are grounded in a strength-based model of service delivery in clinical work with children, adolescents, and families. Discussion of a therapeutic assessment of strengths provides a framework for interventions. Participants will take away practical applications of strengths based strategies, strategies of engagement, and increased motivation for change in clients.

Edward Rawana
Centre of Excellence for Children and Adolescents with Special Needs
Ontario, Canada

D13

Improving and Developing Your Relationships with Youth

This workshop uses an interactive format to teach youth workers to use a tool and a process based on Turning Point Relationship Theory applied to the youth work context. Participants will benefit from the experience of learning and practicing the tool and will be able to facilitate the process with their teams and in training sessions. Participants will have a tool and a way to apply it which can be taught to others and practiced in youth work settings.

Quinn Wilder
University of Wisconsin-Milwaukee
Wisconsin, USA

D14

Prepare in Swedish Prison and Probation Service

A presentation of MI (Motivational Interviewing) with a discussion about motivation to change. Attendees will learn how we work with the ART curriculum in Swedish Prison and Probation Service. How far we have come with developing the Prepare curriculum in Swedish Prison and probation service. Experiences of the Prepare curriculum. How to become a Prepare-trainer in Swedish prison and probation service. Learn about its vision. Attendees will walk away with knowledge about the Prepare curriculum and how it extends and completes the ART program (Aggression Replacement Training). They will also walk away with knowledge about MI and how to use MI in ART or any treatment method to increase motivation to change.

Ola Hall
Eva Jansson
Swedish Prison and Probation Service
Malmö, Sweden



THURSDAY, MAY 28 3:30PM - 5:00PM

E1

Acquired Brain Injury: A silent voice in the school system

This workshop will provide strategies for dealing with the cognitive, behavioral and physical effects of an acquired brain injury within a school aged population.

The presenters will provide an overview of acquired brain injury and then, using digitized videos of scenarios with students discuss effective and ineffective methods for dealing with students with acquired brain injury in educational settings.

Dawn Good

Canadian Centre for Lifespan Development Research at Brock University
Ontario, Canada

John Kumpf

Ontario Brain Surgery Association
Ontario, Canada

E2

Community Collaboration - Resources and Service Learning, and Other Keys to Character Development

This presentation is designed to help you the care professional increase and utilize various approaches and resources for youth, agency, and community collaboration. It is a unique and creative way to allow individuals to learn about their strengths and weaknesses by increasing community involvement in youth care. Practically, this includes areas such as sports, the arts, character development, life and social skills, service learning, and mentoring. This workshop resents collaborative approaches that are individualized for out clients and communities.

Elizabeth Anne Brown

Social Worker
Youth Oasis
Louisiana, USA

E3

Developing a comprehensive program for youth at risk: A Community-Based Organization Experience

We will share with the participants the experience of a community-based organization in running a successful and comprehensive Youth Program. A program that started providing after school services for adolescents and throughout the years became a Youth Development Program that serves more than 450 adolescents a year and is currently funded by state and local government agencies and private foundations. We will explore effective strategies to develop and implement a successful Youth Development Program and learn how to provide comprehensive services to youth through integration of services. Finally we will discuss effective solutions to overcome administrative and sustainability challenges and programmatic barriers.

Luis Felipe Pinzon

Howard Keyes
Hispanic Unity of Florida, Inc
Florida, USA

E4

Ethics for Child and Youth Care Practitioners Part 2

This 3-hour workshop is a participative training that will familiarize parishioners with the Standards of Practice for North American Child and Youth Care Professionals and their application to the process. In 1997 the ACYCP completed and approved a new ethic code for American child and youth care parishioners. Many states have adopted the code. The workshop includes a manual for each participant. This is the most widely CYC ethics curriculum in North America.

Frank Eckles

TYCCWA Senior Ethics Trainer
Texas, USA

E5

Northern Lights - working with Inuit children and adolescents in the Canadian Arctic

The Inuit people of Nunavik live in one of the most isolated areas of North America. Their traditional ways of life and social organization, like the Arctic ice, are disappearing quickly, and have not yet been replaced with viable alternatives. Our workshop 'Northern Lights' will explore how two government run facilities attempt to support children and youths in care. In addition, attendees will learn about the successes and failures of two CYC's from 'the South' who worked in these units during the summer of 2008.

Tahmo Gharabaghi

Andrew Legatto
Bartimaeus Inc. & George Hull Centre
Ontario, Canada

E6

Fostering the Spirit: Strategies to Support Resilience in Children and Youth

We often hear "children are resilient", but have you wondered how some young people succeed in spite of the obstacles and others continue to face major struggles? Resiliency doesn't just happen; it requires competent caring adults providing a safe and nurturing environment. Explore the concept of resiliency, how it affects outcomes for youth, and learn to build an atmosphere that fosters the spirit of young people.

Lou Truitt

Jean Carpenter-Williams
The University of Oklahoma National Resource Center for Youth Services
Oklahoma, USA

THURSDAY, MAY 28 3:30PM - 5:00PM

E7

Teaching for Imagination

This workshop will present information regarding educating for imagination in a variety of formats - power point, lecture, participatory experiential work, and a question/answer/sharing ideas period. Why imagination is vital, how it can legitimately be used in the classroom, and how we can strengthen our own power of imagination will be discussed. Attendees will leave with an annotated bibliography, ideas for developing exercises for the imagination, and information on how to defend educating for imagination in the classroom in today's high-stakes testing environment.

Robin Barre

RISK Learning Center/PSKS
Washington, USA

E8

Epilepsy: More Than Just Seizures

This workshop will improve knowledge and understanding of epilepsy and psychological co-morbidities and elicit a change in attitudes and responses towards Youth With Epilepsy (YWE), which will likely improve outcomes for YWE. Upon completion of the workshop, attendees will have an understanding of what seizures look like, how to respond, and potential side effects of treatments that may influence behavior and learning. Attendees will be equipped with resources to facilitate this process and have access to evidence-based skill modules for brief intervention.

Janelle Wagner

Karen Bakergem
Gigi Smith
Nursing and Comprehensive Epilepsy Center
South Carolina, USA

E9

Intermediary Services for Child Witnesses Testifying in Criminal Court Cases

Based on on-going research conducted for service delivery to the courts in South Africa, attendees will be provided information to understand the process of testimony and challenges associated with child witnesses. Crimes against children and subsequent criminal proceedings where the child is required to testify, as a witness occurs frequently enough to warrant intermediary services. Participants will gain sensitivity and knowledge about the intermediary benefits, and the skills to engage in the intermediary process.

Gert Jonker

Bethany House
South Africa

E10

Maximizing Student Academic and Treatment Goals at the same time!

Norris is a unique school and residential treatment center for at-risk males that take s a holistic approach. It is designed to enhance the individual growth of all students emphasizing interdisciplinary and integrated programming. We have various tools to optimize student's achievement and success in the school setting. Collaboration between school and treatment staff has proven to have a significant impact on the progress of the youth both in school and in treatment. Learn how to successfully treat and teach your clients at the same time.

Jeff Kreeb

Angie Krueger
Bette Mahoney
Norris School
Wisconsin, USA

E11

Action Research as a Tool for Strengthening Practice

Action Research (AR) gives practitioners a tool for systematically strengthening their practice by making observations, implementing changes and studying its impact. AR empowers practitioners to deepen their methods in an effort to maximize the impact to clients. The workshop will teach the central tenets of AR and provide case studies, derived from actual AR projects of youth workers, for hands-on engagement. The goal is to empower participants to engage in reflective practice and develop as professionals. Participants will understand how to take everyday issues, problems and challenges and study them through critical inquiry and observation in order to drive change.

Dana Fusco

York College, City University of New York
New York USA

E12

From Applied Learning to Theoretical Knowledge

This workshop will explore the educational journey of a child and youth care program as it evolves from a two year applied learning department to a 4-year degree program in CYCC. What were the challenges for the faculty, students, and for the child and youth care community? How do you keep the integrity of the existing program while creating a new paradigm?

Bruce Hardy

Douglas College
British Columbia, Canada

THURSDAY, MAY 28 3:30PM - 5:00PM

E13

"I Can Do It"

"I Can Do It!" is a workshop designed to look at how to help youth become competent when it comes to solving their own interpersonal issues using the Problem-Solving structural approach outlined in "The Prepare Curriculum" by Arnold P. Goldstein (1998). Choi and Simon are among the contributors to a new chapter being written on Problem Solving due to their extensive experience teaching the approach. The workshop experience will be a "how to" on helping youth use the problem solving process to look at solutions to difficult situations.

John Choi
Andy Simon
Kim Van de Water
Batshaw Youth and Family Centres
Quebec, Canada

E14

Working with Troubled Teens Adolescent Depression, Suicide and other Emotional Disturbance

You will learn the behavioral indicators and dynamics of adolescence depression, suicide and other emotional disturbances. We will explore the idea that the teenagers is grieving his or her childhood. By the conclusion attendees will have a better understanding of the signs and symptoms of depression and how to make appropriate referrals for further assessments and treatment services. You will learn how to signs to identify teenagers issues. Learn how to respond to those attempting to become suicide. Increase the knowledge of prevention and write your own action plan

Madeleine Rybicki
Holy Family Institute
Ohio, USA

E15

Colton Home's Empowering, Supporting and Working with Youth & Families

This workshop will present a community-based family-centered program for families of pre-Adolescent youth in a group home setting showing how the multidisciplinary team uses anger control, empathy and social skills training for both youth and their families. We will describe the Parent Effectiveness Training and Family A.R.T. programs which help build and strengthen the family unit and explain how the program works closely with community programs and schools to best meet the youth's and family's individual needs. Finally, we will discuss how the team provides home-based intervention, follow up and support. It will give the attendees information and some of the necessary tools to operate a similar program.

Lawrence Ryan
Batshaw Youth & Family Centers
Quebec, Canada

E16

The PersonBrain Model: A Neuro-Relational Model for Working with Troubled Children and Youth

This workshop will present a neuro-relational framework to child and youth care workers providing essential insight into practical neuroscience and the therapeutic skills of using ecological management to change personal experience. The PersonBrain, Model, a neuro-relational training program is designed to empower helping adults with critical therapeutic skills needed to transform troubled children and youth. Using modern neuroscience and the best of positive, ecological and relational psychology, this innovative program teaches the essentials of how the brain, body, culture and relational ecology function to together to impact ones overall life experience. In fact, in the PersonBrain Model, we say "We are our experiences!"

Paul Baker
NeuroRelational Associates International, Inc.
Georgia, USA

E17

Transfer of Training and Adult Learning

This workshop will describe the development and implementation of the national certification program in the U.S. and provide an overview of several Canadian certification initiatives. Completion of the North American Certification Project led to a national certification program in the U.S. that spans practice settings and regional areas. Implications for addressing the current workforce crisis, lessons learned, and future opportunities for collaboration and development of the field to raise standards and awareness of the contribution of child and youth work will be explored. This session will be of special interest to trainers, educators, program administrators and public policy planners.

Dale Curry
Kent State University
Ohio, USA

E18

KidVision VPK

KidVision VPK is a free and innovative online professional development dedicated to teaching the Pre-Kindergarten Education Standards to teachers and children in a meaningful way. We take virtual field trips all around the community. While we are learning important lessons about our world we are also concentrating on the specific skills that children need to be successful when they start kindergarten. It is fun and interactive. So put on your walking shoes and your thinking caps and let's go have some fun at www.KidVisionVPK.org

Penny Bernath
WPBT Channel 2
Florida, USA

FRIDAY, MAY 29 10:30AM - 12:00PM

F1

Fit4Defense-Youth Empowerment through assertiveness and fitness training

Fit4Defense is a highly successful program created for children and youth for the purposes of violence prevention, increased safety and risk reduction. The workshop will introduce participants to an effective, standardized curriculum for providing youth with information, self-defense skills, and techniques to gain life-skills, improve communication and manage anger. It is an activity-based workshop with discussion. Workshop participants will gain skills to assist youth to identify their strengths and challenges.

Suzanne Jean
Nanette Taylor
Hollyburn Family Services
British Columbia, Canada

F2

Developing Web-based Learning Communities among Child Welfare Professionals

Florida's center for the Advancement of Child Welfare Practice provides a web-based portal for information, tools, multi-media training, and interactive features designed to support child welfare professional practice. The Center is an initiative of Florida's Department of Children and Families and is responsive to the Community-based Care service model comprised of many stakeholders. This Web-based service model supports the development of a child welfare learning community through a single source web portal. www.centerforchildwelfare.org

Donald N. Policella
Pamela Menendez
University of South Florida
Florida, USA

F3

Defining Supervision in a Professionally Package Way

Creating and presenting training programs agency wide across all disciplines and programs will focus, this workshop on supervision and defining supervision in a professionally packaged way. Attendee will gain understanding that ultimately supervision should be the vehicle to create dynamic growth, establish high professional standards and enhance quality and culturally competent services.

Frank Delano
JBFC Child Training Institute
New York, USA

F4

Therapeutic Intervention with Preschoolers: Building A Brighter Future

Early intervention is critical for preschool children who have been identified as at risk or who have behavioral, social, and/or emotional deficits. This workshop will present the latest strategies in clinical treatment for the preschool population. Critical issues and assessment approaches for working with this population will be discussed. Specific strategies utilized at Kids in Distress Therapeutic Preschool will be shared.

Kevin R. Bochenek, MA, MS
Kids In Distress, Inc.
Florida, USA

F5

Current Trends in Team Care and Speech Therapy for Children with Craniofacial Anomalies (Cleft Lip and Palate)

This presentation will review current trends in craniofacial anomaly team care and protocols for initiating treatment modalities with an emphasis on speech therapy. The audience will also be provided with information pertaining to the co-treat relationship between school based speech-language pathologists (SLPS) and private/team SLPS. Current perspectives on the interpersonal dynamics of professionals will also be discussed. Resources to assist with the care of these children will also be imparted.

Tambi Braun
Bobby Brasher
Florida Cleft Palate and Craniofacial Association
Florida, USA

F6

The Navigator of Life

The Navigator of Life is a teaching tool and empowerment process for individuals and an overture to our greater community that, accepted and implemented, has the power to affect dramatic change in a real and lasting manner. Attendees will come away with an understanding of how to seize and harness their personal power, uplift and expand their potential, and affect dramatic change in a real and lasting manner. This tool reinforces a Core Belief structure of respect, personal improvement, and uplifting behaviors and encourages individuals to question the impact of education, health and personal development on decisions.

Nathaniel J. Williams
HumanWorks Affiliates, Inc.
Pennsylvania, USA

FRIDAY, MAY 29 10:30AM - 12:00PM

F7

Norris Works for Kids

This workshop explores the Norris Model, which was developed over time and incorporates different modalities of research-based intervention including assessments, individualized education, intervention tools, strategies, resources, data, and many forms of communication. Trained youth care staff provide a positive environment where youth are reinforced. Families are also incorporated into the educational and healing process so that re-unification is a successful option. Participants will learn about a model of effective intervention for adjudicated males in a residential treatment center. The process of development, pitfalls and strategies, new treatment tools and theories of intervention will also be discussed.

Judith L. Davis
Norris Adolescent Center
Wisconsin, USA

Bill Wilke
Norris Adolescent Center
Wisconsin, USA

F8

Family Network Partnership: A University-Community Collaboration for Youth

The workshop will describe a 12-year-old community based collaboration of a university school of social work with multiple local agencies in a small Mississippi city, including a county youth court and public housing authority, for the prevention of/intervention with low-income minority youth at risk for delinquency. The structure of the collaboration (known as "Family Network Partnership," or FNP), outcomes, and implications are discussed.

Michael Forster
University of Southern Mississippi School of Social Work
Mississippi, USA

F9

A team-based approach to managing medications with youth

Psychotropic medications can play an integral role in treating many mental health problems. Youth, parents, caregivers, and professionals need access to information, tools, and resources to make informed decisions about medications. The Med Ed Booklet and Passport are innovative resources created to help youth and their caregivers exchange information about medications. These tools include information about medications (including possible side effects and interactions), answers to many frequently asked questions about these medications, and information about youths and rights related to medications.

Purnima Sundar
Provincial Centre of Excellence for Child and Youth Mental Health at CHEO
Ontario, Canada



F10

Child and Youth Care Student Volunteer Efforts in Post-Hurricane Katrina

In the aftermath of hurricane Katrina, a team of nine Child and Youth Care students/practitioners and an instructor from Red River College, Canada, offered support to a stricken community in Louisiana. This team worked together with the staff of Hope Haven to assist young people affected by the hurricane. The proposed workshop will summarize the experiences, successes, and challenges from the perspective of the volunteers and Hope Haven staff. It will also examine the feasibility of and recommendations for the participation of Child and Youth Care practitioners in future efforts to offer their skills to communities in need.

Susan Claire Johnson
Deborah Gural
Jessica Lusk
Red River College
Manitoba, Canada

F11

From CTF to RBS: How Contra Costa County Opened the Doors and Reconnected Youth with their Values, Families and Communities.

When out-of-home care is required for California's teenagers, some may end up in a locked community treatment facility (CTF) for extended periods, isolated from their family and community, lonely and unprepared for life after discharge. We will describe the transition of a CTF to an unlocked, short-term, community-focused intervention, per California's residentially-based services (RBS) guidelines. We will emphasize implementation techniques. Graphical representations of measurable client outcomes, such as client safety, permanence and well-being, destructive behavior, AWOLS, restraints, and duration of stay will be shown. Participants will learn a specific approach to engaging children and families in a relationship-based

Daren Dickson
Sarah Chance
Seneca Center
California, USA

F12

Simple behavioral approaches to managing disruptive behaviors

It is customary in residential care facilities to deal with disruptive behaviors by youth. Sometimes the actions of youth care workers can cause disruptions or escalate them. This workshop will benefit youth care workers by helping them understand their role as workers and dissecting how their personal behaviors and demeanors affect the youth we work with. Positive, simple behavioral approaches to managing disruptive behaviors will be addressed as well. This workshop does not recommend or teach the use of punishment or aversive behavioral techniques nor does it teach physical interventions.

Teshezia George
N'finity Consulting, LLC
Indiana, USA

F13

Seizure Recognition, First Aid & Classroom Management. Epilepsy and School Education Program

The Epilepsy School Education program provides school nurses, teachers and caregivers with information regarding seizure recognition, first aid and management of epilepsy/seizure disorder in the classroom. You will learn strategies that allow management of students with seizures in a supportive and safe environment. Ways to present positive social and development outcomes for the student with epilepsy/seizure disorder will be discussed.

Sue Livingston
Kathy Finch
Epilepsy Foundation
Pennsylvania, USA

F14

ART Training as a Form of Reducing Fear in Addicted Individuals

KARAN Association, one of the largest Polish non-governmental organizations engaging in programs of assistance to addicted persons and their families, and to children from dysfunctional and impoverished families. Today, the KARAN Association run 6 live-in centres for drug addicts, 18 socio-therapy day care centres, and 8 family counseling centres and consulting offices. Father Paul Rosik is a author of a study of fear levels in ART training participants at live-in KARAN Association Centres: ART Training as a Form of Reducing Fear in Addicted Individuals. He will present his study and work with drug addicted people who have problem with aggression. Attendees will be provided with new information and new resources.

Rosik Pawel
Karan Association
Warsaw, Poland

F15

Evidence-based Practice in Group Care. How Does Child and Youth Care Measure Up?

This presentation describes the results of a survey of all staffed group care programs (n=300+) in the Province of Ontario. The research project explored the contributions of CYC practitioners and documented the differences in evidence-based practices among the child welfare, children's mental health and private sector providers of group care and treatment. Participants will learn about how the work of CYC practitioners in group care settings is linked to evidence-based practices and intervention strategies. Best practices in relation of case management and the link between education, experience, and use of best practices will be identified.

Carol Stuart
Tina Kroll
Caitlin McMillan
Ryerson University
Ontario, Canada

REGISTRATION FORM

First Name _____
 Last Name _____ Dr. Mr. Mrs. Ms. (circle one)
 Position/Job Title _____
 Organization/School _____
 Address _____
 City _____ State/Province/Country _____ Zip/Postal Code _____
 Work Phone _____ Work Fax _____ Cel/Home Phone _____
 Email _____ Website _____
 Other Attendees _____

Pre-Conference Day
 ICART Day \$125 Qty. _____
 Educators & Trainers Day \$75** Qty. _____
 ** Fee includes lunch with this seminar

Conference Members
 Before March 31 \$350 Qty. _____
 Before April 30 \$400 Qty. _____
 After April 30 \$450 Qty. _____

Full Time Student**
 Before April 30 \$150 Qty. _____
 After April 30 \$175 Qty. _____
 ** Must provide proof of current enrollment at an undergraduate or graduate school.

Child and Youth Care Professional Certification (CYC-P) Testing
 CYC-P Testing Fee \$75 Qty. _____

Non-Members
 Before April 30 \$425 Qty. _____
 After April 30 \$475 Qty. _____

**** Florida Groups Special ****
 1 complimentary for every 5 paid registrations at \$350 each \$1,750 Qty. _____

Method of Payment Visa MC Amex Discover Diners Club Check Cash **Total Payment \$** _____
 Card # _____ Expiration Date _____ Security Code _____
 Name on Card _____
 Address on Statement _____

FIRST CHOICE (Choose one from each session)

WEDNESDAY MAY 27 1:30 PM - 3:00 PM	WEDNESDAY MAY 27 3:30 PM - 5:00 PM	THURSDAY MAY 28 10:30 AM - 12:00 PM	THURSDAY MAY 28 1:30 PM - 3:00 PM	THURSDAY MAY 28 3:30 PM - 5:00 PM	FRIDAY MAY 28 10:30 AM - 12:00 PM
<input type="checkbox"/> A1 <input type="checkbox"/> A11 <input type="checkbox"/> A21	<input type="checkbox"/> B1 <input type="checkbox"/> B11 <input type="checkbox"/>	<input type="checkbox"/> C1 <input type="checkbox"/> C11 <input type="checkbox"/> C21	<input type="checkbox"/> D1 <input type="checkbox"/> D11 <input type="checkbox"/>	<input type="checkbox"/> E1 <input type="checkbox"/> E11 <input type="checkbox"/>	<input type="checkbox"/> F1 <input type="checkbox"/> F11 <input type="checkbox"/>
<input type="checkbox"/> A2 <input type="checkbox"/> A12 <input type="checkbox"/> A22	<input type="checkbox"/> B2 <input type="checkbox"/> B12 <input type="checkbox"/>	<input type="checkbox"/> C2 <input type="checkbox"/> C12 <input type="checkbox"/> C22	<input type="checkbox"/> D2 <input type="checkbox"/> D12 <input type="checkbox"/>	<input type="checkbox"/> E2 <input type="checkbox"/> E12 <input type="checkbox"/>	<input type="checkbox"/> F2 <input type="checkbox"/> F12 <input type="checkbox"/>
<input type="checkbox"/> A3 <input type="checkbox"/> A13 <input type="checkbox"/> A23	<input type="checkbox"/> B3 <input type="checkbox"/> B13 <input type="checkbox"/>	<input type="checkbox"/> C3 <input type="checkbox"/> C13 <input type="checkbox"/>	<input type="checkbox"/> D3 <input type="checkbox"/> D13 <input type="checkbox"/>	<input type="checkbox"/> E3 <input type="checkbox"/> E13 <input type="checkbox"/>	<input type="checkbox"/> F3 <input type="checkbox"/> F13 <input type="checkbox"/>
<input type="checkbox"/> A4 <input type="checkbox"/> A14 <input type="checkbox"/> A24	<input type="checkbox"/> B4 <input type="checkbox"/> B14 <input type="checkbox"/>	<input type="checkbox"/> C4 <input type="checkbox"/> C14 <input type="checkbox"/>	<input type="checkbox"/> D4 <input type="checkbox"/> D14 <input type="checkbox"/>	<input type="checkbox"/> E4 <input type="checkbox"/> E14 <input type="checkbox"/>	<input type="checkbox"/> F4 <input type="checkbox"/> F14 <input type="checkbox"/>
<input type="checkbox"/> A5 <input type="checkbox"/> A15 <input type="checkbox"/>	<input type="checkbox"/> B5 <input type="checkbox"/> B15 <input type="checkbox"/>	<input type="checkbox"/> C5 <input type="checkbox"/> C15 <input type="checkbox"/>	<input type="checkbox"/> D5 <input type="checkbox"/>	<input type="checkbox"/> E5 <input type="checkbox"/> E15 <input type="checkbox"/>	<input type="checkbox"/> F5 <input type="checkbox"/> F15 <input type="checkbox"/>
<input type="checkbox"/> A6 <input type="checkbox"/> A16 <input type="checkbox"/>	<input type="checkbox"/> B6 <input type="checkbox"/> B16 <input type="checkbox"/>	<input type="checkbox"/> C6 <input type="checkbox"/> C16 <input type="checkbox"/>	<input type="checkbox"/> D6 <input type="checkbox"/>	<input type="checkbox"/> E6 <input type="checkbox"/> E16 <input type="checkbox"/>	<input type="checkbox"/> F6 <input type="checkbox"/>
<input type="checkbox"/> A7 <input type="checkbox"/> A17 <input type="checkbox"/>	<input type="checkbox"/> B7 <input type="checkbox"/> B17 <input type="checkbox"/>	<input type="checkbox"/> C7 <input type="checkbox"/> C17 <input type="checkbox"/>	<input type="checkbox"/> D7 <input type="checkbox"/>	<input type="checkbox"/> E7 <input type="checkbox"/> E17 <input type="checkbox"/>	<input type="checkbox"/> F7 <input type="checkbox"/>
<input type="checkbox"/> A8 <input type="checkbox"/> A18 <input type="checkbox"/>	<input type="checkbox"/> B8 <input type="checkbox"/> B18 <input type="checkbox"/>	<input type="checkbox"/> C8 <input type="checkbox"/> C18 <input type="checkbox"/>	<input type="checkbox"/> D8 <input type="checkbox"/>	<input type="checkbox"/> E8 <input type="checkbox"/> E18 <input type="checkbox"/>	<input type="checkbox"/> F8 <input type="checkbox"/>
<input type="checkbox"/> A9 <input type="checkbox"/> A19 <input type="checkbox"/>	<input type="checkbox"/> B9 <input type="checkbox"/> B19 <input type="checkbox"/>	<input type="checkbox"/> C9 <input type="checkbox"/> C19 <input type="checkbox"/>	<input type="checkbox"/> D9 <input type="checkbox"/>	<input type="checkbox"/> E9 <input type="checkbox"/>	<input type="checkbox"/> F9 <input type="checkbox"/>
<input type="checkbox"/> A10 <input type="checkbox"/> A20 <input type="checkbox"/>	<input type="checkbox"/> B10 <input type="checkbox"/>	<input type="checkbox"/> C10 <input type="checkbox"/> C20 <input type="checkbox"/>	<input type="checkbox"/> D10 <input type="checkbox"/>	<input type="checkbox"/> E10 <input type="checkbox"/>	<input type="checkbox"/> F10 <input type="checkbox"/>

SECOND CHOICE (Choose one from each session)

WEDNESDAY MAY 27 1:30 PM - 3:00 PM	WEDNESDAY MAY 27 3:30 PM - 5:00 PM	THURSDAY MAY 28 10:30 AM - 12:00 PM	THURSDAY MAY 28 1:30 PM - 3:00 PM	THURSDAY MAY 28 3:30 PM - 5:00 PM	FRIDAY MAY 28 10:30 AM - 12:00 PM
<input type="checkbox"/> A1 <input type="checkbox"/> A11 <input type="checkbox"/> A21	<input type="checkbox"/> B1 <input type="checkbox"/> B11 <input type="checkbox"/>	<input type="checkbox"/> C1 <input type="checkbox"/> C11 <input type="checkbox"/> C21	<input type="checkbox"/> D1 <input type="checkbox"/> D11 <input type="checkbox"/>	<input type="checkbox"/> E1 <input type="checkbox"/> E11 <input type="checkbox"/>	<input type="checkbox"/> F1 <input type="checkbox"/> F11 <input type="checkbox"/>
<input type="checkbox"/> A2 <input type="checkbox"/> A12 <input type="checkbox"/> A22	<input type="checkbox"/> B2 <input type="checkbox"/> B12 <input type="checkbox"/>	<input type="checkbox"/> C2 <input type="checkbox"/> C12 <input type="checkbox"/> C22	<input type="checkbox"/> D2 <input type="checkbox"/> D12 <input type="checkbox"/>	<input type="checkbox"/> E2 <input type="checkbox"/> E12 <input type="checkbox"/>	<input type="checkbox"/> F2 <input type="checkbox"/> F12 <input type="checkbox"/>
<input type="checkbox"/> A3 <input type="checkbox"/> A13 <input type="checkbox"/> A23	<input type="checkbox"/> B3 <input type="checkbox"/> B13 <input type="checkbox"/>	<input type="checkbox"/> C3 <input type="checkbox"/> C13 <input type="checkbox"/>	<input type="checkbox"/> D3 <input type="checkbox"/> D13 <input type="checkbox"/>	<input type="checkbox"/> E3 <input type="checkbox"/> E13 <input type="checkbox"/>	<input type="checkbox"/> F3 <input type="checkbox"/> F13 <input type="checkbox"/>
<input type="checkbox"/> A4 <input type="checkbox"/> A14 <input type="checkbox"/> A24	<input type="checkbox"/> B4 <input type="checkbox"/> B14 <input type="checkbox"/>	<input type="checkbox"/> C4 <input type="checkbox"/> C14 <input type="checkbox"/>	<input type="checkbox"/> D4 <input type="checkbox"/> D14 <input type="checkbox"/>	<input type="checkbox"/> E4 <input type="checkbox"/> E14 <input type="checkbox"/>	<input type="checkbox"/> F4 <input type="checkbox"/> F14 <input type="checkbox"/>
<input type="checkbox"/> A5 <input type="checkbox"/> A15 <input type="checkbox"/>	<input type="checkbox"/> B5 <input type="checkbox"/> B15 <input type="checkbox"/>	<input type="checkbox"/> C5 <input type="checkbox"/> C15 <input type="checkbox"/>	<input type="checkbox"/> D5 <input type="checkbox"/>	<input type="checkbox"/> E5 <input type="checkbox"/> E15 <input type="checkbox"/>	<input type="checkbox"/> F5 <input type="checkbox"/> F15 <input type="checkbox"/>
<input type="checkbox"/> A6 <input type="checkbox"/> A16 <input type="checkbox"/>	<input type="checkbox"/> B6 <input type="checkbox"/> B16 <input type="checkbox"/>	<input type="checkbox"/> C6 <input type="checkbox"/> C16 <input type="checkbox"/>	<input type="checkbox"/> D6 <input type="checkbox"/>	<input type="checkbox"/> E6 <input type="checkbox"/> E16 <input type="checkbox"/>	<input type="checkbox"/> F6 <input type="checkbox"/>
<input type="checkbox"/> A7 <input type="checkbox"/> A17 <input type="checkbox"/>	<input type="checkbox"/> B7 <input type="checkbox"/> B17 <input type="checkbox"/>	<input type="checkbox"/> C7 <input type="checkbox"/> C17 <input type="checkbox"/>	<input type="checkbox"/> D7 <input type="checkbox"/>	<input type="checkbox"/> E7 <input type="checkbox"/> E17 <input type="checkbox"/>	<input type="checkbox"/> F7 <input type="checkbox"/>
<input type="checkbox"/> A8 <input type="checkbox"/> A18 <input type="checkbox"/>	<input type="checkbox"/> B8 <input type="checkbox"/> B18 <input type="checkbox"/>	<input type="checkbox"/> C8 <input type="checkbox"/> C18 <input type="checkbox"/>	<input type="checkbox"/> D8 <input type="checkbox"/>	<input type="checkbox"/> E8 <input type="checkbox"/> E18 <input type="checkbox"/>	<input type="checkbox"/> F8 <input type="checkbox"/>
<input type="checkbox"/> A9 <input type="checkbox"/> A19 <input type="checkbox"/>	<input type="checkbox"/> B9 <input type="checkbox"/> B19 <input type="checkbox"/>	<input type="checkbox"/> C9 <input type="checkbox"/> C19 <input type="checkbox"/>	<input type="checkbox"/> D9 <input type="checkbox"/>	<input type="checkbox"/> E9 <input type="checkbox"/>	<input type="checkbox"/> F9 <input type="checkbox"/>
<input type="checkbox"/> A10 <input type="checkbox"/> A20 <input type="checkbox"/>	<input type="checkbox"/> B10 <input type="checkbox"/>	<input type="checkbox"/> C10 <input type="checkbox"/> C20 <input type="checkbox"/>	<input type="checkbox"/> D10 <input type="checkbox"/>	<input type="checkbox"/> E10 <input type="checkbox"/>	<input type="checkbox"/> F10 <input type="checkbox"/>

CANCELLATION AND REFUND POLICY
 Participants who cannot attend the 9th Triennial International Child and Youth Care Conference must submit their refund request in writing and it must be postmarked by March 26, 2009. No refund will be issued for requests postmarked after this date. A 25% administration fee will be deducted from all refunds. Requests must be submitted to: ICYCC2009 REFUNDS PO Box 11858 Fort Lauderdale FL 33339-1858 USA
 To register online go to www.icycc2009.com

CONFERENCE FEES

Pre-Conference Day

ICART Fee \$125

Educators & Trainers Fee \$ 75

Fee includes lunch with this seminar

Conference

Members

Very Early Fee (Before March 31) \$350

Early Fee (Before April 30) \$400

Regular Fee (After April 30) \$450

Non-Members

Early Fee (Before April 30) \$425

Regular Fee (After April 30) \$475

Full Time Student **

Early Fee (Before April 30) \$150

Regular Fee (After April 30) \$175

** Must provide proof of current registration at an undergraduate or graduate school.

Child and Youth Care Professional Certification (CYC-P) Testing

CYC-P Testing Fee \$ 75

**** Florida Groups Special ****
 1 complimentary for every 5 paid registrations at \$350 each \$1,750

CANCELLATION AND REFUND POLICY

Participants who cannot attend the 9th Triennial International Child and Youth Care Conference must submit their refund request in writing and it must be postmarked by March 26, 2009. No refund will be issued for requests postmarked after this date. A 25% administration fee will be deducted from all refunds. Requests must be submitted to: ICYCC2009 REFUNDS PO Box 11858 Fort Lauderdale FL 33339-1858 USA

To register go to www.icycc2009.com

REGISTRATION INFO

PREFERRED HOTEL ACCOMMODATIONS



Embassy Suites

1100 SE 17th Street
 Fort Lauderdale,
 Florida, USA 33316
 1-954-527-2700

\$149 p/night

- Complimentary Internet Kiosk
- Complimentary Cooked-to-order Breakfast each and every morning.
- Complimentary Manager's Reception in our Atrium each evening from 5:30pm - 7:30pm.
- Complimentary State of the Art Fitness Center
- Complimentary Business Center with printing from your suite available
- Complimentary USA Today® (M-F)
- Two Flat Panel televisions, 1 per room, with cable, HBO® and Pay-Per-View movies available
- Two line telephones with voice mail
- Embassy Essentials™ Bedding providing luxurious comfort and support
- High Speed internet access available throughout the hotel (for a nominal fee)



Comfort Suites

1800 S. Federal Highway
 Fort Lauderdale FL 33316
 Ph: (954) 767-8700

\$99 p/night

- Outdoor Heated Pool
- Fitness Room
- Free Ft. Lauderdale Airport Shuttle*
- Free Port Everglades Cruise Shuttle*
- Free Shuttle to Broward Convention Center
- Free Deluxe Continental Breakfast
- Fresh Coffee 24 hours
- Free USA Today (Mon-Fri)
- Extended Cable TV - Fee HBO
- Free Wireless Internet Access
- Free High Speed Internet (Lobby)

* SHUTTLE OPERATES FROM 5:00 AM UNTIL 12:30 AM.

FORT LAUDERDALE

THE VENICE OF AMERICA



Greater Fort Lauderdale's hospitality industry expanded, modernized and improved. Millions were spent on new hotel developments and upgrades. New facilities such as the Broward Center for the Performing Arts and the 600,000-square-foot Greater Fort Lauderdale/Broward County Convention Center were built. Fort Lauderdale /Hollywood International Airport – which now stands as the fastest growing large airport in the U.S. over the past decade – was greatly expanded and Port Everglades emerged as the country's top luxury cruise port.



Greater Fort Lauderdale is South Florida's renaissance story.

Trendy boutiques and luxury retailers line Las Olas Boulevard, Greater Fort Lauderdale's unofficial "Main Street," and the upscale Galleria mall is the result of a recent \$100 million renovation. More than 60 golf courses make the destination a golfer's paradise. Attractions such as Butterfly World – the largest butterfly aviary in North America – and the natural wonder of the Everglades bring visitors in touch with nature and native culture. A three-tiered coral

Greater Fort Lauderdale's Blue Wave beaches – so certified for their outstanding beauty and cleanliness – have been complemented by upscale hotels and a wide variety of top attractions and activities. Casual yet sophisticated,



reef system and more than 75 wreck sites draw novice and expert scuba divers, while kayaking, parasailing, kiteboarding and snorkeling entertain those looking to stay above water.

In May 2007, Greater Fort Lauderdale saw the opening of its first ultra-luxe property – the St. Regis Resort, Fort Lauderdale, the first of its brand in the entire state of Florida. In August of 2008 the property was re-branded as The Ritz-Carlton, Fort Lauderdale. Even more changes are coming: 2009 will bring the W Fort Lauderdale, and a new property from hotel mogul, Donald Trump. Stay tuned for other welcome additions to a destination that continues to reinvent itself.

Head into the Intracoastal Waterway, where some 42,000 registered yachts make Greater Fort Lauderdale the yachting capital of the world. Or see an acclaimed exhibit at the Museum of Art, Fort Lauderdale. Or dine at one of the destination's trendy nightspots or chic restaurants.

Additionally, Greater Fort Lauderdale's luxury product now has its own cyber-home: www.sunny.org/luxe. The new "Lauderdale Luxe" microsite features lounge-style music from sunny.org radio and has dedicated categories for hotels, including upscale brands such as Ritz-Carlton, Starwood and Hyatt currently open; dining, where consumers can get the scoop on the finest culinary experiences, such as dockside dining along the Intracoastal Waterway; and a "pursuits" section that showcases Greater Fort Lauderdale's beyond-the-beach casual sophistication: spa suggestions, vibrant nightlife, high-end shopping and more. \$



Reasons for becoming a sponsor of the 9th Triennial International Child and Youth Care Conference

For its Vision

To bring together agencies, professionals and clients in support of a global leadership endeavor toward advocacy, programming and quality services delivery that will improve the lives of at-risk children young people and their families.

For its Focus

Children, Youth and Families in the Child Welfare System and the Juvenile Justice System.

Topics at a Glance

- Anger and Aggression Issues
- Abuse and Neglect
- Attachment Issues
- Advocacy & Public Policy
- Community Based Care
- Cultural Competence/Diversity
- Child Sexual Predators on the Internet
- Current Trends and Issues on Child and Youth Development
- Child and Youth homeless
- Early Childhood Care and Education
- Ethical Practice Issues
- Foster Care
- Family-Centered Practice
- Group Care
- In-home Care
- Independent Living
- Juvenile Justice
- Obesity
- Professional Standards
- Research and Training Initiatives
- Residential Treatment
- Substance Abuse
- Special Education
- Teen Pregnancy

Attendee Profile

The 9th Triennial ICYCC Conference consists of close to 2000 child and youth care workers, healthcare providers, students, social workers, researchers, teaching professionals, and child welfare trainers are expected to convene in Fort Lauderdale, Florida in May 2009 from countries all over the world, with a strong national representation.

Previous Conference

The International Child and Youth Care Conference is held every 3 years and most recently hosted the 8th ICYCC with over 1600 international participants from 38 countries, in Montreal, Quebec in 2006.

Conference Theme

Global Warning: Children, Youth and Family Matters
Global Warning: There is a similar trajectory between global warning and global warming and unless something realistically is done to reverse trends, the consequences could be disastrous. There is a real global warning that if we do not do what at risk children youth and families what they need, the world will continue



SPONSORSHIP

to hemorrhage, and lose valuable, promising lives, and with that the future is bleak.

The conference is a laser focus from the perspective of:

- The professional and service providers: (The client look)
- The people being served (The professional look)
- The philanthropies and organizations that support the work done (The outlook)

The alignment of the stars, the organizations, philanthropies, the staff and the clients are imperative in order to produce stellar outcomes.

Overview of Sponsorship Opportunities

TITLE Sponsor	\$50,000
Co-Presenters	\$40,000 SOLD
Platinum	\$25,000
Gold	\$10,000
Silver	\$ 7,500
Co-Registration	\$ 5,000

Visibility and Presence	
Media Center	\$15,000
Speaking Opportunity (major lunch)	\$15,000
Delegate Bag	\$15,000
Delegate Badge Lanyard	\$10,000
T-Shirts	\$10,000
Program Book	\$10,000
Coffee Stations (3 days)	\$10,000
Coffee Station (1 day)	\$ 1,500

Program Book (full color)	
Front Cover (Included in the Title & Presenters Sponsorship)	
Back Cover (Included in the Program Book Sponsor)	
Inside front cover	\$ 2,500
Back Inside cover	\$ 2,500
Full Page	\$ 1,800
Half a page	\$ 1,000
¼ page	\$ 600

Educational Sponsorship Opportunities	
Pre-conference Educators' Day	\$ 5,000
Keynote Lecture	\$ 3,500
Existing Program Workshop	\$ 2,500

Branding Opportunities	
Keynote Speaker (3 available)	\$ 5,000
Pad & Pen	\$ 5,000
Delegates's Bag Insert	\$ 1,000

Socialize and sponsor Educators' Lunch	\$ 4,000
--	----------

ACKNOWLEDGEMENTS

The Organizing Committee, the Co-sponsoring Organizations and the Management of the 9th Triennial International Child and Youth Care Conference want to acknowledge that without the support, commitment and hard work of the following individuals and organizations, the ICYCC2009 Conference would not have been possible.

Conference Advisors

Tony Maciocia
Batshaw Youth and Family Centres

Robert Calame
Batshaw Youth and Family Centres

Varda Mann-Feder
Concordia University

Carol Kelly
California State University at Northridge

Andy Schneider-Muñoz
Academy for Educational Development

Program Committee

Elizabeth Wynter
Chair
United Way of Broward County

Rune Nensen
The Oasis Residential Center

Frank Delano
JBFC Institute for Child-Care Professionalization and Training

Carrie R Cohen
Charlene Swanson
Nova Southeastern University

Terri Shermitt
School Board of Broward County

Film Festival Committee

Susan Tommers
Chair
Forever Families

Volunteer Committee

Cheryl Cruz
Chair
Nova Southeastern University

Social Event Committee

Barbara Baber
Chair
City of Fort Lauderdale

Carrie R Cohen

People to People Hospitality Committee

Kim Welles
Chair
Department of Children and Families

Alumni Committee

Casey Sagaria
Chair
Nova Southeastern University

Broward County's
Only 24/7
HELPLINE

Dial 2-1-1

Your First Call For Help!

Providing Information & Referrals to Health and Human Services & Crisis Intervention

2-1-1
Get Connected. Get Answers.

www.211-broward.org

Local Collaborators

Maureen Jaeger
Executive Office of Governor Charlie Crist

Josie Bacallao
Hispanic Unity of Florida

Ana Valladares
Children Services Council of Broward County

Sandra Bastien
Children Services Council of Broward County

Lissette Egues
The Miami Herald

David Spangler
Nova Southeastern University

Brian Weinblatt
Nova Southeastern University

Sandra Bernard-Bastien
Children Services Council of Broward County

Abbey Fortney
Inspiri24 Design Studio, Inc.

Mindy Yianilos
Marketing Consultant

CONFERENCE CO-CHAIRS

Dr. Michael Gaffley (NSU): gaffleym@nova.edu
Dr. Chip Bonsutto (ACYCP):
ambonsutto@clevelandcatholiccharities.org
Heather Modlin (CCCYCA): j.modlin@nl.rogers.com

CONFERENCE CONSULTANT

Tony MACIOCIA MS
International Child & Youth Care Conference
Tony_Maciocia@ssss.gouv.qc.ca

CONFERENCE CONTACT INFO

Conference Manager: jsanchez@icycc2009.com
Administration: admin@icycc2009.com
Information: info@icycc2009.com
Registrations Inquiries: registrations@icycc2009.com
Workshop Proposals: rfps@icycc2009.com
General Information Number: (954) 397-2830
Fax Number: (954) 366-1540

ACKNOWLEDGEMENTS

Local Helping Organizations

Epilepsy Foundation of America

Nova Southeastern University

Department of Children and Families

Children Services Council of Broward County

United Way of Broward County

Greater Fort Lauderdale Convention & Visitors Bureau

City of Fort Lauderdale

Broward County Government

Broward County Sheriff Office

Broward County Public Schools

Parent to Parent of Miami

Family Central

Kids in Distress

Comcast

ChildNet

NBC6

CONTACTS

EVENT STAFF

Conference Manager

Juan Carlos Sánchez | General Manager
Royal Connoisseurs, LLC
P.O. BOX 11858
Fort Lauderdale FL 33339-1858
Ph: 954-397-2830 | Fax: 954-366-1540
Web: www.royalcor.com
Email: jsanchez@icycc2009.com

Registrations Manager

Ginny Fujino | Director
Blacktie South Florida
Ph: 954-707-2970 | Fax: 954-208-0188
Web: www.blacktie-southflorida.com
Email: ginny@blacktie-southflorida.com

